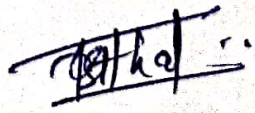


CHECK LIST FOR ESTIMATE SCRUTINY OF GODOWN

SR.NO	DESCRIPTION	
1	NAME OF WORK :- PROPOSED CONSTRUCTION OF 1020 MT CAP.WH BLDG WITH ANCILLARY WORKS AT GUT NO 36 ,DUDHANWADI,TAL-BADNAPUR, DIST- JALNA.	
2	7/12 & 8- Area	:-
3	Area as per 7/12	:-
4	Proposed Plat Area on Drawing	:-
5	Existing Road / Name Standard of Road (V.R./ O.D.R./MDR/S.H./N.H.)	:-
6	Control Distance Line From the Road Cente	:-
7	Approch Road From ExistingRoad	:-
8	Details Of Drawing [As Per M.S.W.C. Norms]	:- Yes
	A)Plan	:- Yes
	B)Elevation	:- Yes
	C) Section/Cross Section/Front Elevation	:- Yes
	D)Location Plan/ Village Plan	:- Yes
9	Layout Plan	:- Yes
10	Estimate Based on D.S.R Rates For the Year	:- Civil e-SSR 2021-22
11	Certified lead Statement	:- Yes
12	Certified Quarry Chart	:- Yes
13	Abstract/ Recap [Estimated Amount + GST 18% + Contingency 0.0.% + Insurance 0.5%]	:- 9961739
14	General Description	:- Yes
15	Scrutiny Charges [DD of Amount Rs...../-	:- 0
16	Plinth Hight From Modified Road Top	:- 0.90met


V.E. KSHIRSAGAR
Civil Engineer
CAJ/R/2020/APL/00239

FARMISSION FARMERS PRODUCER CO. LTD.
GAT NO-36,DUDHANWADI,TAL-BADNAPUR, DIST- JALNA..

RECAPULATION SHEET

FINAL

NAME OF WORK :- PROPOSED CONSTRUCTION OF 1020 MT CAP.WH BLDG WITH ANCILLARY WORKS AT GUT NO 36
,DUDHANWADI,TAL-BADNAPUR, DIST- JALNA.

Based on E SSR -2021-22

PARTICULARS			AMOUNT	<u>1020</u>	Cost per MT
	Cap.	Unit		Cost per MT	
Sub Work :-I Const. of 1020 MT WH Bldg.	1020	MT	Rs 8070364	7912	Cost per MT
Sub Work II :- Electrification		1.5%	Rs 121055		
Sub Work III :- Royalty Charges			Rs 173349		
Sub work IV:- Material Lab Testing charges			Rs 41740		
	TOTAL COST		8406508	8242	Cost per MT
	Add GST	18%	Rs 1513172		
	Add L.I.	0.5%	Rs 42033		
	Grand Total		<u>Rs 9961713</u>	9766	Cost per MT
	Say		<u>9961739</u>		


V.E. KSHIRSAGAR
Civil Engineer
CAJ/R/2020/APL/00239

FARMISSION FARMERS PRODUCER CO. LTD.
GAT NO-36,DUDHANWADI,TAL-BADNAPUR, DIST- JALNA..

GENERAL REPORT

**NAME OF WORK :- PROPOSED CONSTRUCTION OF 1020 MT CAP.WH BLDG WITH
ANCILLARY WORKS AT GUT NO 36 ,DUDHANWADI,TAL-BADNAPUR, DIST- JALNA.**

The Estimate has been Prepared for constructing Ware House .
Bldg. of 1020 MT.Cap.of amounting Rs. **9961739**

As per below, Following are the Provisions being made while preparing
estimate. And Estimate item rates is considered as per PWD currant e-SSR for year 2021 -
22.

- 1 Excavation
- 2 Footing ,Coloumns, Beams of RCC-M20
- 3 BBM For Foundation And Super Structure.
- 4 TMT FE-500 Bar For RCC Work
- 5 OutSide& Inside Plaster Work.
- 6 RCC Tremix Flooring Work
- 7 Steel Rolling Shutter
- 8 Steel Grill Windows (V1 & V2)
- 9 Painting / Colouring Work For Inside & Outer Side
- 10 Structrural Steel Work For Roofing Truss
- 11 Turbo Ventiletar.
- 12 colour coated Zincalume Sheet For Roofing .


V.E. KSHIRSAGAR
Civil Engineer
CAJJR/R/2020/APL/00239

**FARMISSION FARMERS PRODUCER CO. LTD.
GAT NO-36,DUDHANWADI,TAL-BADNAPUR, DIST- JALNA..**

ABSTRACT SHEET

**NAME OF WORK :- PROPOSED CONSTRUCTION OF 1020 MT CAP.WH BLDG WITH
ANCILLARY WORKS AT GUT NO 36 ,DUDHANWADI,TAL-BADNAPUR, DIST- JALNA.**

Sr .No	Item No	Description of Item	Qty	Unit	Rate	Amount
		SUB WORK-I CIVIL WORK (WH BLDG.)				
1.0	21.02/ 115	Excavation for foundation in earth, soil of all types, sand, gravel and soft murum, including removing the excavated material up to a distance of 50 m. beyond the building area and stacking and spreading as directed, dewatering, preparing the bed for the foundation and necessary back filling, ramming, watering including shoring and strutting etc. complete. (Lift upto 1.5 m.) By Mechanical Means	100.00	Cum	193.00	19,300.00
2.0	21.04/ 115	Excavation for foundation in earth, soils of all types, sand,gravel and soft murum, including removing the excavated material upto a distance of 50 metres beyond the building area and stacking and spreading as directed, dewatering, preparing the bed for the foundation and necessary back filling, ramming, watering including shoring and strutting etc. complete. (Lift from 1.5m to 3.0m) By Mechanical Means	0.50	Cum	241.00	121.00
3.0	21.06/ 148	Excavation for foundation in hard murum including removing the excavated material upto distance of 50 metres beyond the building area and stacking and spreading as directed, dewatering, preparing the bed for the foundation and necessary back filling, ramming, watering including shoring and strutting etc. complete. (Lift upto 1.50 m) By Mechanical Means	46.00	Cum	212.00	9,752.00
4.0	21.08/ 115	Excavation for foundation in Hard murum including removing the excavated material upto a distance of 50 metres beyond the building area and stacking and spreading as directed, dewatering, preparing the bed for the foundation and necessary back filling, ramming, watering including shoring and strutting etc. complete. (Lift from 1.5 to 3.0m.) By Mechanical Means	0.50	Cum	265.00	133.00

FARMISSION FARMERS PRODUCER CO. LTD.
GAT NO-36,DUDHANWADI,TAL-BADNAPUR, DIST- JALNA..

ABSTRACT SHEET

**NAME OF WORK :- PROPOSED CONSTRUCTION OF 1020 MT CAP.WH BLDG WITH
 ANCILLARY WORKS AT GUT NO 36 ,DUDHANWADI,TAL-BADNAPUR, DIST- JALNA.**

Sr .No	Item No	Description of Item	Qty	Unit	Rate	Amount
SUB WORK-I CIVIL WORK (WH BLDG.)						
1.0	21.02/ 115	Excavation for foundation in earth, soil of all types, sand, gravel and soft murum, including removing the excavated material up to a distance of 50 m. beyond the building area and stacking and spreading as directed, dewatering, preparing the bed for the foundation and necessary back filling, ramming, watering including shoring and strutting etc. complete. (Lift upto 1.5 m.) By Mechanical Means	100.00	Cum	193.00	19,300.00
2.0	21.04/ 115	Excavation for foundation in earth, soils of all types, sand,gravel and soft murum, including removing the excavated material upto a distance of 50 metres beyond the building area and stacking and spreading as directed, dewatering, preparing the bed for the foundation and necessary back filling, ramming, watering including shoring and strutting etc. complete. (Lift from 1.5m to 3.0m) By Mechanical Means	0.50	Cum	241.00	121.00
3.0	21.06/ 148	Excavation for foundation in hard murum including removing the excavated material upto distance of 50 metres beyond the building area and stacking and spreading as directed, dewatering, preparing the bed for the foundation and necessary back filling, ramming, watering including shoring and strutting etc. complete. (Lift upto 1.50 m) By Mechanical Means	46.00	Cum	212.00	9,752.00
4.0	21.08/ 115	Excavation for foundation in Hard murum including removing the excavated material upto a distance of 50 metres beyond the building area and stacking and spreading as directed, dewatering, preparing the bed for the foundation and necessary back filling, ramming, watering including shoring and strutting etc. complete. (Lift from 1.5 to 3.0m.) By Mechanical Means	0.50	Cum	265.00	133.00

Sr.No	Item No	Description of Item	Qty	Unit	Rate	Amount
5.0	21.10/ 115	Excavation for foundation in hard murum and boulders including removing the excavated material up to a distance 50 metres, beyond the building area and stacking and spreading as directed, dewatering, preparing the bed for the foundation and necessary back filling, ramming, watering including shoring and strutting etc. complete. (Lift upto 1.5m.) By Mechanical Mean	15.00	Cum	235.00	3,525.00
6.0	21.12/ 115	Excavation for foundation in Hard murum and boulders including removing the excavated material upto a distance of 50 metres, beyond the building area and stacking and spreading as directed, dewatering, preparing the bed for the foundation and necessary back filling, ramming, watering including shoring and strutting etc. complete. (Lift from 1.5 m to 3.0 m.) By Mechanical Means	1.00	Cum	291.00	291.00
7.0	2.11/2 3	Excavation for roadway in earth, soil of all sorts, sand, gravel or soft murum including dressing section to the required grade, camber and side slopes and conveying the excavated materials with all lifts upto a lead of 50m. and spreading for embankment or stacking as directed.	55.00	Cum	104.00	5,720.00
8.0	2.13/2 3	Excavation for roadway in hard murum and boulder including dressing section to the required grade, camber and side slopes and conveying the excavated materials with all lifts upto a lead of 50m. and spreading for embankment or stacking as directed.	1.00	Cum	121.00	121.00
9.0	24.01/ 129	Providing and laying Cast in situ/Ready Mix cement concrete in M-10 of trap/ granite/ quartzite/ gneiss metal for foundation and bedding including bailing out water, Steel centering, formwork, laying/pumping, compacting, roughening them if special finish is to be provided, finishing if required and curing complete, with fully automatic micro processor based PLC with SCADA enabled reversible Drum Type mixer/concrete Batch mix plant (Pan mixer) etc. complete. With fine aggregate (Crushed sand VSI Grade)	63.00	Cum	6051.27	3,81,231.00

Sr.No	Item No	Description of Item	Qty	Unit	Rate	Amount
10.0	28.01/ 146	Providing uncoursed rubble masonry of trap / granite / quartzite / gneiss stones in cement mortar 1:6 in foundation and plinth of inner walls / in plinth of external walls including bailing out water manually , striking joints on un exposed faces and watering etc.complete	1.00	cu m	4757.00	4,757.00
11.0	27.01/ 144	Providing second class Burnt Brick masonry with conventional/ I.S. type bricks in cement mortar 1:6 in foundations and plinth of inner walls/ in plinth external walls including bailing out water manually , striking joints on unexposed faces, raking out joints on exposed faces and watering etc. Complete.	31.00	Cum	7712.18	2,39,078.00
12.0	R.A.	Providing & laying 35 cms wide single layer tarfelt by applying initial coat of shalibond @1kg/sqm fixing in place by wire nails for D.P.C. at plinth as directed by Engineer in charge.	34.00	Sqm	349.25	11,875.00
13.0	26.33/ 139	Providing and fixing in position TMT - FE - 500 bar reinforcement of various diameters for R.C.C. pile caps, footings, foundations, slabs, beams columns, canopies, staircase, newels, chajjas, lintels pardis, copings, fins, arches etc. as per detailed designs, drawings and schedules. including cutting, bending, hooking the bars, binding with wires or tack welding and supporting as required complete..	11.00	MT	71778.00	7,89,558.00
14.0	25.11/ 133	Providing and laying in situ /Ready Mix cement concrete M=20 of trap / granite /quartzite/ gneiss metal for R.C.C. work in foundations like raft, strip foundations, grillage and footings of R.C.C. columns and steel stanchions etc. including bailing out water, Steel centering formwork, laying/pumping cover blocks, compaction and curing roughening the surface if special finish is to be provided (Excluding reinforcement and structural steel) etc. complete, with fully automatic micro processor based PLC with out SCADA enabled reversible Drum Type mixer/ concrete Batch mix plant (Pan mixer) etc. complete. With fine aggregate (Crushed sand VSI Grade)	25.10	Cum	7118.64	1,78,678.00

Sr .No	Item No	Description of Item	Qty	Unit	Rate	Amount
15.0	25.31/ 134	Providing and laying Cast in situ/Ready Mix cement concrete M-20 of trap / granite /quartzite/ gneiss metal for R.C.C. columns as per detailed designs and drawing or as directed including steel centering, formwork, cover blocks, laying/pumping, compaction finishing the formed surfaces with cement mortar 1:3 of sufficient minimum thickness to give a smooth and even surface or roughening if special finish is to be provided and curing etc. complete,(Excluding reinforcement and structural steel).with fully automatic micro processor based PLC with Out SCADA enabled reversible Drum Type mixer/ concrete Batch mix plant (Pan mixer) etc. complete. With fine aggregate (Crushed sand VSI Grade)	29.58	Cum	13439.64	3,97,545.00
16.0	25.50/ 135	Providing and laying Cast in situ/Ready Mix cement concrete M-20 of trap / granite /quartzite/ gneiss metal for R.C.C. beams and lintels as per detailed designs and drawings or as directed including steel centering, formwork, cover blocks, laying/pumping, compaction and roughening the surface if special finish is to be provided and curing etc. complete. (Excluding reinforcement and structural steel). with fully automatic micro processor based PLC with SCADA enabled reversible Drum Type mixer/ concrete Batch mix plant (Pan mixer) etc. complete. With fine aggregate (Crushed sand VSI Grade)	48.00	Cum	11935.64	5,72,911.00
17.0	26.05/ 137	Providing and laying Cast in situ/Ready Mix cement concrete M-20 of trap/ granite/ quartzite/ gneiss metal for R.C.C. chajja as per detailed design and drawings including steel centering, formwork, cover blocks, laying/pumping, compacting and roughening the surface if special finish is to be provided and curing complete. (Excluding reinforcement and structural steel). with fully automatic micro processor based PLC with SCADA enabled reversible Drum Type mixer/ concrete Batch mix plant (Pan mixer) etc. complete. With fine aggregate (Crushed sand VSI Grade)	2.19	Cum	13563.64	29,705.00

Sr .No	Item No	Description of Item	Qty	Unit	Rate	Amount
18.0	25.70/ 135	Providing and laying Cast in situ/Ready Mix cement concrete M-20 of trap/ granite / quartzite/ gneiss metal for R.C.C. slabs and landings as per detailed designs and drawings including steel centering, formwork, cover blocks, laying/pumping, compaction finishing the formed surfaces with cement mortar 1:3 of sufficient minimum thickness to give a smooth and even surface or roughening if special finish is to be provided and curing etc. complete. With fine aggregate (Crushed sand VSI Grade)	3.00	Cum	14395.64	43,187.00
19.0	27.05/ 144	Providing second class Burnt Brick masonry with conventional/I.S.type brick since mentmortar 1:6 in superstructure including striking joints, raking out joints, watering and scaffolding etc. Complete	100.00	Cum	7939.18	7,93,918.00
20.0	24.16/ 132	Providing and laying Cast in situ/Ready Mix cement concrete M-15 of trap/ granite/quartzite/gneiss metal for coping to plinth or parapet, moulded or chamfered as per drawing or as directed including steel centering, plywood/ steel formwork compacting, roughening them if special finish is to be provided, finishing uneven and honeycombed surface and curing etc. complete. The Cement Mortar 1:3 plaster is considered for rendering uneven and honeycombed surface only. Newly laid concrete shall be covered by gunny bag, plastic, tarpaulin etc. (Wooden centering will not be allowed.) With fine aggregate (Crushed sand VSI Grade)	1.00	Cum	6502.85	6,503.00
21.0	32.11/ 153	Providing sand faced plaster externally in cement mortar using approved screened sand, in all positions including base coat of 15 mm thick in cement mortar 1:4 using waterproofing compound at 1Kilogramper cement bag curing the same for not less than 2 days and keeping the surface of the base coat rough to receive the sand faced treatment 6 to 8 mm thick in cement mortar 1:4 finishing the surface by taking out grains and curing for fourteen days scaffolding etc.complete.	751.00	Sqm	605.20	4,54,506.00

Sr .No	Item No	Description of Item	Qty	Unit	Rate	Amount
22.0	32.04/ 153	Providing internal cement plaster 12 mm thick in Single coats in cement mortar 1:4 without neeru finish, to concrete, brick surface, in all positions including scaffolding and curing etc.complete.	584.00	Sqm	270.20	1,57,797.00
23.0	32.04/ 153 /32.21 /154	Providing internal cement plaster 20mm thick in Single coats in cement mortar 1:4 with neeru finish, to concrete, brick surface, in all positions including scaffolding and curing etc.complete.	108.00	Sqm	338.20	36,526.00
24.0	35.15/ 165	Providing and applying three coat s of water proof cement paint of approved manufacture and of approved colour to new plastered surfaces includings caffolding if necessary, cleaning and preparing the surface, watering for two days etc. complete.	510.00	Sqm	97.00	49,470.00
25.0	35.25/ 165	Providing and applying two coat s of exterior acraylic emulsion paint confirming to corresponding I.S. of approved manufacture and of approved colour to the plastered surfaces including cleaning,preparing the plaster surface,applying primer coat,scaffolding if necessary , and watering the surface for two days etc complete.	602.00	Sqm	240.00	1,44,480.00
26.0	35.11/ 164	Providing and applying two coats (exterior quality) of flat oil paint of approved colour and shade to the plastered surface in buildings and workshops including scaffolding if necessary, cleaning the surface and preparing surface etc. complete. (excluding primer coat)	106.00	Sqm	83.00	8,798.00

Sr.No	Item No	Description of Item	Qty	Unit	Rate	Amount
27.0	39.24/ 181	Providing and fixing rolling shutter fabricated from steel laths of minimum thickness 0.9 mm with lock plate of 3.15 mm thickness reinforced with 35 x 35 x 5 mm angle section fitted with sliding bolts and handles for both sides, deep M.S. channel section of depth and thickness not less than 65 mm and 3.15 mm respectively with hold fast arrangements, M.S. Bracket plate 300 x 300 x 3.15 mm minimum size and shape with square bar, suspension shaft of minimum 32 mm diameter, hood cover of M.S. sheet not less than 0.9 mm thickness and of any size at top and safety devices including mechanical gear operation arrangement consisting of worm gear wheels and worms of high grade cast iron or mild steel and one coat of red lead primer etc. complete. (I.S. 62481979) (Without mechanical gear)	22.00	Sqm	4310.00	94,820.00
28.0	40.01/ 192	Providing and fixing mildsteel grill work for windows,ventilatorsetc. 20Kilogram/Square Metre as per drawing including fixtures,necessary welding and painting with one coat s of anticorrosive paint and two coats of oil painting complete.	17.00	Sqm	1845.00	31,365.00
29.0	23.04/ 129	Providing structural steel work in trusses, other similar trussed purlins and members with all bracing, gusset plates etc. as per detailed designs and drawings or as directed including cutting, fabricating, hoisting, erecting fixing in position, Making riveted/ bolted/ welded connection and one coat of anticorrosive paint and over it 2 coats of oil painting approved quality and shade etc. complete.	14.28	M T	#####	#####

Sr.No	Item No	Description of Item	Qty	Unit	Rate	Amount
30.0	38.34/ 173	<p>Providing and fixing colour coated Zincalume (R) AZ150 (min 150 gms/sq.mt. total on each side) profiled sheets for roofing. The feed material is manufactured out of nominal 0.45 mm Base Metal Thickness (BMT) (0.5 mm TCT), Hi-strength steel with min.550 MPa yield strength, metallic hot dip coated with Aluminium-Zinc alloy (55% aluminium 43.4% zinc 1.6% silicon) with COLORBOND (R) steel quality super durable polyester paint coat (with inorganic pigment). The paint shall have a total coating thickness of nominal 35 um, comprising of nominal 25 um exterior coat on top surface and nominal 10 um reverse coat on back surface. Profile sheet shall have nom. 950-1050 mm effective cover width and nominal 25-30 mm deep ribs with subtle square fluting in the five pan at nominal 180-250 mm centerto-center. The end rib shall be designed for anti-capillary groove. and return leg. The feed material should have coil manufacturers product details marked a regular interval. Including fasteners with min. fastened with min. 25 um Zinc-Tin alloy coated, Hex head, self-drilling screw etc. complete. (weight of profile 4.52 Kilogram/Square Metre)</p>	655.00	Sqm	1095.00	7,17,225.00

Sr.No	Item No	Description of Item	Qty	Unit	Rate	Amount
31.0	38.35/ 174	Providing and fixing of colour Zinalume (R) AZ150 (Min150gms/Sq.mt. total on each sides) profiled sheets for Ridges. The feed material is manufactured out of nominal 0.45mm Base Metal Thickness (BMT) (0.5mmTCT), Hi- strength steel with min 550 MP a yield strength, metallic hot dip coated with Aluminum- Zinc alloy (55% aluminium 43.4 % zinc 1.6 % silicon) with COLORBOND (R) steel quality super durable polyester paint coat (with inorganic pigment). The paint shall have a total coating thickness of nominal 35 um, comprising of nominal 25 um exterior coat on top surface & nominal 10 um reverse coat on back surfaces. Profile sheet shall have nominal 950-1050 mm effective cover width & nominal 25-30 mm dip ribs with suitable square fluting in the 5 pan @ nominal 180-250 mm c/c. The end rib shall be designed for anticapillary groove & return leg. The feed material should have coil manufacturers product details marked at regular interval. including fasteners with minimum fastened with minimum 25 um Zinc- tin alloy coated, hex headed, self drilling screw etc. complete. [As directed by Engineer in charge]. (D.S.R.33 A /71) (For 0.60 m wide Ridge)	36.90	Rum	702.00	25,904.00
32.0	42/37 4	Providing and fixing wind oppareted tarbo S S. ventiletar system (24 inch dia.) over exsiting roof including cutting of sheet ,propar fixing in position to true line & level with all fixtures & fastning, providing 0.8mm thick FRP sheet for covering area between roof and fan so as to provide waterfoof joints with approved water proffing compound making good the roof surface including cleaning etc. complete (General application for all types of roofs for ventilation & day light parpose at terrace [As directed by Engineer in charge]. (Jalgaon D.S.R.304 /123)	16.00	Nos	8680.00	1,38,880.00
33.0	R A	Providing & constructing parapet coping of size 35 x 35 cms in cement mortar 1:4 with conical top and side drops and round finish at A.C. sheet joints including finishing the whole with 20 mm thick cement plaster 1:4 with cement finish, 1.	34.20	RMT	1179.00	40,322.00

Sr.No	Item No	Description of Item	Qty	Unit	Rate	Amount
34.0	21.36/117	Filling in plinth with approved excavated stuff obtained from departmental land including watering, compacting etc. complete as directed.(Bd. A.10/262)	163.00	Cum	113.00	18,419.00
35.0	RA	Providing Hard Murum cohesive non-swelling materials in plinth in layers of 20 cms etc. complete as directed. Only compacted thickness is payable [Rd.23/202 & Rd.28/205].	320.00	Cum	508.06	1,62,580.00
36.0	2.31/24	Compacting the Hard Murum, cohesive non swelling materials in plinth upto 200 mm loose with power roller 8 to 10 tone capacity including artificial watering etc. complete as directed.[Rd.38/210]	1021.00	Sqm	19.00	19,399.00
37.0	RA	Providing & laying stone metal layer of 20 cm thickness with 60 mm over size metal 65% and 40 mm size metal 35% with sand or stone chips spreading & leveling handpacking complete.[Rd.22/201,Rd.20/200 & Rd.20/205]	232.00	Cum	1384.36	3,21,172.00
38.0	MR	Compacting oversize & size metal layers combindaly with power roler not less than 8 tonnes including artificial watering & leveling etc. complete as directed (Rd.35/209)	1020.67	Sqm	20.00	20,414.00
39.0	33.30/158	Providing and laying in situ cement concrete M20 with tremix treatment for 100 mm thickness for flooring with groove cutting of 4mm wide and 20mm deep with necessary refilling with bitumen and including vaccum dewatering etc. complete.	541.00	Sqm	746.00	4,03,586.00
40.0	R A	Providing treatment of TREMIX vaccum dewatering over prelaid cement concrete 1:2:4 surface including fixing of M.S.Channel formwork as per required size and placing of dowel rod, vibrating the concrete by needle vibrator and leveling by	1.00	Sqm	50.00	50.00
41.0	23.01/129	Providing & fixing ISMC 150 with weight @ 16.80 Kgs/Rmt 20 mm dia & 0.50 m long bolts & nuts @ 1.00 mc/c, M.S. angles for stands of fire bucket including chain fixing in well including three coats of oil paint etc. compl	0.98	MT	89181.00	87,409.00

Sr .No	Item No	Description of Item	Qty	Unit	Rate	Amount
42.0	RA	Providing & Fixing in position M.S. ladder of 45 cms width made out 50 x 50 x 6 mm two angles for rails and M.S. angle stiffeners at three places as directed with M.S. round bars of 20 mm dia for steps @ every 30 cm c/c including fixing	10.00	RMT	805.80	8,058.00
43.0	44.18/ 214	Providing and fixing lioghtening conductor system comprising of erecting Air-Termination consisting of tubular copperrod of 25 mm dia. 1.2 mm thick with multiple point shead 1.2mt.long (HeavyDuty)weldedor clamped to G.I .pipe pole Bgrade 50 mm dia of requiredl ength with M.S.round bnase plate 25 Cmdiamand 10mm thick at bottom embeded in cement concrete 1:3:6 d foundation of size 45 cm diam x 45cm Height and providing earth ing with copper earth plate of size60x60x0.3cms with cadmiumpl at ed nut bolt sto fixe arthing strip burried inspecially prepared earth pits1.5metre below ground level with 40 Kilogram charcoal and salt with alternate layers of charcoal and salt and G.I.pipe 40 mm dia2meter length burried inearthe up to earthling plateremining portion above ground level forwatering and refillingc ompete Note-Copper strip fropmlightening conductor is not considered in this item.	1.00	Nos	22189.00	22,189.00
44.0	2.25/2 4	Conveying the materials obtained from excavation including all lifts, laying in layers, breaking clods, dressing to the required lines, curves, grades and section for a lead over 50m to 300m from the site of excavation to the site of dep	10.00	Cum	177.00	1,770.00
45.0	5 KM lead stat.	Conveying the materials obtained from excavation including laying in layers, breaking clods, dressing to the required lines, curves, grades and section for all leads & lifts from the site of excavation to the site of deposition away from building as directed engineer in charge.	10.00	Cum	220.46	2,205.00

Sr.No	Item No	Description of Item	Qty	Unit	Rate	Amount
46.0	21.24/ 117	Providing pre-constructional Anti-termite treatment as per I.S. 6313 (Part-II) - 1973 by treating the top surface of plinth filling at the rate of 5 litres of emulsion concentrates of 0.5 percent of Hephoclore per square meter of surface	547.00	sq m	94.00	51,418.00
47.0	39.68/ 188	Providing and fixing in position powder coated aluminium louvered windows / ventilator of various sizes with powder coating as per detailed drawing and specifications including aluminium frames 80 x 38 mm x 1.22 mm box type, 5 mm thick sheet glass louvers, of approved quality etc. complete.	16.41	sq m	3107.00	50,986.00
		Total Amount-				80,70,364.00


V.E. KSHIRSAGAR
 Civil Engineer
 CAJRR/2020/APL/00239

FARMISSION FARMERS PRODUCER CO. LTD.
GAT NO-36,DUDHANWADI,TAL-BADNAPUR, DIST- JALNA..

Sub Work :-J Const. of 1020 MT WH Bldg.													QTY.	UNIT	LN/ P.N	BASIC RATE	LEAD CHARGES SAND HM	METAL Bricks	TS & R.A.	TOTAL	Add 0 % C Area Charges 0.000	TOTAL OF RATES 6 TO 11	ADD % FOR CHARGES 0.0000	TOTAL OF RATES 6 TO 14	AMOUNT
LN.	DESCRIPTION OF ITEM	3	4	6	6	7	8	10	11	12	13	14	15	16											
1	Excavation for foundation in earth, soil of all types, sand, gravel and soft murum, including removing the excavated material up to a distance of 50 m. beyond the building area and stacking and spreading as directed, dewatering, preparing the bed for the foundation and necessary back filling, ramming, watering including shoring and strutting etc. complete. (Lift upto 1.5 m.) By Mechanical Means	123.00	Cum	21.02/115	193.00				193.00		193.00	0.00	193.00	23739											
2	Excavation for foundation in earth, soils of all types, sand,gravel and soft murum, including removing the excavated material upto a distance of 50 metres beyond the building area and stacking and spreading as directed, dewatering, preparing the bed for the foundation and necessary back filling, ramming, watering including shoring and strutting etc. complete. (Lift from 1.5m to 3.0m) By Mechanical Means	0.50	Cum	21.04/115	241.00				241.00		241.00	0.00	241.00	121											
3	Excavation for foundation in hard murum including removing the excavated material upto distance of 50 metres beyond the building area and stacking and spreading as directed, dewatering, preparing the bed for the foundation and necessary back filling, ramming, watering including shoring and strutting etc. complete. (Lift upto 1.50 m) By Mechanical Means	46.00	Cum	21.06/148	212.00				212.00		212.00	0.00	212.00	9752											
4	Excavation for foundation in Hard murum including removing the excavated material upto a distance of 50 metres beyond the building area and stacking and spreading as directed, dewatering, preparing the bed for the foundation and necessary back filling, ramming, watering including shoring and strutting etc. complete. (Lift from 1.5 to 3.0m.) By Mechanical Means	0.50	Cum	21.08/115	265.00				265.00		265.00	0.00	265.00	133											
5	Excavation for foundation in hard murum and boulders including removing the excavated material up to a distance 50 metres, beyond the building area and stacking and spreading as directed, dewatering, preparing the bed for the foundation and necessary back filling, ramming, watering including shoring and strutting etc. complete. (Lift upto 1.5m.) By Mechanical Mean	16.00	Cum	21.10/115	235.00				235.00		235.00	0.00	235.00	3760											
6	Excavation for foundation in Hard murum and boulders including removing the excavated material upto a distance of 50 metres, beyond the building area and stacking and spreading as directed, dewatering, preparing the bed for the foundation and necessary back filling, ramming, watering including shoring and strutting etc. complete. (Lift from 1.5 m to 3.0 m.) By Mechanical Means	1.00	Cum	21.12/115	291.00				291.00		291.00	0.00	291.00	291											

7	Excavation for roadway in earth, soil of all sorts, sand, gravel or soft murrum including dressing section to the required grade, camber and side slopes and conveying the excavated materials with all lifts upto a lead of 50m. and spreading for embankment or stacking as directed.	55.00	Cum	2.11/23	104.00			104.00		104.00	0.00	104.00	5720
8	Excavation for roadway in hard murrum and boulder including dressing section to the required grade, camber and side slopes and conveying the excavated materials with all lifts upto a lead of 50m and spreading for embankment or stacking as directed.	1.00	Cum	2.13/23	121.00			121.00		121.00	0.00	121.00	121
9	Providing and laying Cast in situ /Ready Mix cement concrete in M-10 of trap / granite / quartzite / gneiss metal for foundation and bedding including bailing out water. Steel centering, formwork, laying/pumping, compacting, roughening them if special finish is to be provided. finishing if required and curing complete, with fully automatic micro processor based PLC with SCADA enabled reversible Drum Type mixer /concrete Batch mix Plant (Pan mixer) etc. complete. With fine egegragr (Crushed sand VSI Grade)	65.00	Cum	24.01/129	5538	633.27	-120.00	6051.27		6051.27	0.00	6051.27	393333
10	Providing uncoursed rubble masonry of trap / granite / quartzite / gneiss stones in cement mortar 1:6 in foundation and plinth of inner walls / in plinth of external walls including bailing out water manually , striking joints on un exposed faces and watering etc.complete	1.00	cu m	28.01/146	4757			4757.00		4757.00	0.00	4757.00	4757
11	Providing second class Burnt Brick masonry with conventional/ I.S. type bricks in cement mortar 1:6 in foundations and plinth of inner walls/ in plinth external walls including bailing out water manually , striking joints on unexposed faces, raking out joints on exposed	31.00	Cum	27.01/144	7343	369.18		7712.18		7712.18	0.00	7712.18	239078
12	Providing & laying 35 cms wide single layer tariff by applying initial coat of shabond (@1kg/sqm fixing in place by wire nails for D.P.C. at plinth as directed by Engineer in charge.	34.00	Sqm	R.A.	349.25			349.25		349.25	0.00	349.25	11875
13	Providing and fixing in position TMT - FE - 500 bar reinforcement of various diameters for R.C.C. pile caps, footings, foundations, slabs, beams columns, canopies, staircase, newels, chajjas, jinnels pardis, copings, fins, arches etc. as per detailed designs, drawings and schedules. including cutting, bending, hooking the bars, binding with wires or tack welding and supporting as required complete..	11.00	MT	26.33/139	71778.00			71778.00		71778.00	0.00	71778.00	789558
14	Providing and laying in situ /Ready Mix cement concrete M-20 of trap / granite /quartzite/ gneiss metal for R.C.C. work in foundations like raft, strip foundations, grillage and footings of R.C.C. columns and steel stanchions etc. including bailing out water, Steel centering formwork, laying/pumping cover blocks, compaction and curing roughening the surface if special finish is to be provided (Excluding reinforcement and structural steel) etc. complete, with fully automatic micro processor based PLC with out	25.10	Cum	25.11/133	6666.00	572.64	-120.00	7118.64		7118.64	0.00	7118.64	178678

15	Providing and laying Cast in situ/Ready Mix concrete M-20 of trap / granite / quartzite / gneiss metal for R.C.C. columns as per detailed designs and drawing or as directed including steel centering, formwork, cover blocks, laying/pumping, compaction finishing the formed surfaces with cement mortar 1:3 of sufficient minimum thickness to give a smooth and even surface or roughening if special finish is to be provided and curing etc. complete. (Excluding reinforcement and structural steel) with fully	29.58	Cum	25.31/134	12987.00	572.64	-120.00	13439.64	13439.64	0.00	13439.64	397545
16	Providing and laying Cast in situ/Ready Mix concrete M-20 of trap / granite / quartzite / gneiss metal for R.C.C. beams and lintels as per detailed designs and drawings or as directed including steel centering, formwork, cover blocks, laying/pumping, compaction and roughening the surface if special finish is to be provided and curing etc. complete. (Excluding reinforcement and structural steel) with fully automatic micro processor based PLC with SCADA enabled reversible Drum Type mixer / concrete Batch	48.00	Cum	25.50/135	11483.00	572.64	-120.00	11935.64	11935.64	0.00	11935.64	572911
17	Providing and laying Cast in situ/Ready Mix concrete M-20 of trap / granite / quartzite / gneiss metal for R.C.C. chajja as per detailed design and drawings including steel centering, formwork, cover blocks, laying/pumping, compacting and roughening the surface if special finish is to be provided and curing complete. (Excluding reinforcement and structural steel), with fully automatic micro processor based PLC with SCADA enabled reversible Drum Type mixer / concrete Batch mix plant (Pan mixer) etc. complete.	2.19	Cum	26.05/137	13111.00	572.64	-120.00	13563.64	13563.64	0.00	13563.64	29705
18	Providing and laying Cast in situ/Ready Mix concrete M-20 of trap / granite / quartzite / gneiss metal for R.C.C. slabs and landings as per detailed designs and drawings including steel centering, formwork, cover blocks, laying/pumping, compaction finishing the formed surfaces with cement mortar 1:3 of sufficient minimum thickness to give a smooth and even surface or roughening if special finish is to be provided and curing etc. complete. With fine aggregate (Crushed sand VSI Grade)	3.00	Cum	25.70/135	13943.00	572.64	-120.00	14395.64	14395.64	0.00	14395.64	43187
19	Providing second class Burnt Brick masonry with conventional/1/5 type brick since mortar 1:6 in superstructure including striking joints, raking out joints, watering and scaffolding etc. Complete	100.00	Cum	27.05/144	7570.00	369.18		7939.18	7939.18	0.00	7939.18	793918
20	Providing and laying Cast in situ/Ready Mix concrete M-15 of trap / granite / quartzite / gneiss metal for coping to plinth or parapet, moulded or chamfered as per drawing or as directed including steel centering, plywood / steel formwork compacting, roughening them if special finish is to be provided, finishing uneven and honeycombed surface and curing etc. complete. The Cement Mortar 1:3 plaster is considered for rendering uneven and honeycombed surface only. Newly laid concrete shall be covered by	1.00	Cum	24.16/132	6030.00	592.85	-120.00	6502.85	6502.85	0.00	6502.85	6503
21	Providing sand faced plaster externally in cement mortar using approved screed sand, in all positions including base coat of 15 mm thick in cement mortar 1:4 using waterproofing compound at 1Kilogram per cement bag curing the same for not less than 2 days and keeping the surface of the base coat rough to receive the sand faced treatment 6 to 8 mm thick in cement mortar 1:4 finishing the surface by taking out grains and curing for fourteen days scaffolding etc. complete.	751.00	Sqm	32.11/153	599.00	6.20		605.20	605.20	0.00	605.20	454506

22	Providing internal cement plaster 12 mm thick in Single coats in cement mortar 1:4 without neeru finish, to concrete, brick surface, in all positions including scaffolding and curing etc.complete.	584.00	Sqm	32.04/153	264.00	6.20			270.20		270.20	0.00	270.20	157797
23	Providing internal cement plaster 20mm thick in Single coats in cement mortar 1:4 with neeru finish, to concrete, brick surface, in all positions including scaffolding and curing etc.complete.	108.00	Sqm	32.04/153 /32.21/154	332.00	6.20			338.20		338.20	0.00	338.20	36526
24	Providing and applying three coats of water proof cement paint of approved manufacture and of approved colour to new plastered surfaces including scaffolding if necessary, cleaning and preparing the surface, watering for two days etc. complete.	590.00	Sqm	35.15/165	97.00				97.00		97.00	0.00	97.00	57230
25	Providing and applying two coats of exterior acryalyc emulsion paint conforming to corresponding I.S. of approved manufacture and of approved colour to the plastered surfaces including cleaning, preparing the plaster surface, applying primer coat, scaffolding if necessary, and watering the surface for two days etc. complete.	602.00	Sqm	35.25/165	240.00				240.00		240.00	0.00	240.00	144480
26	Providing and applying two coats (exterior quality) of flat oil paint of approved colour and shade to the plastered surface in buildings and workshops including scaffolding if necessary, cleaning the surface and preparing surface etc. complete. (excluding primer coat)	106.00	Sqm	35.11/164	83.00				83.00		83.00	0.00	83.00	8798
27	Providing and fixing rolling shutter fabricated from steel laths of minimum thickness 0.9 mm with lock plate of 3.15 mm thickness reinforced with 35 x 35 x 5 mm angle section fitted with sliding bolts and handles for both sides, deep M.S. channel section of depth and thickness not less than 65 mm and 3.15 mm respectively with hold fast arrangements, M.S. Bracket plate 300 x 300 x 3.15 mm minimum size and shape with square bar, suspension shaft of minimum 32 mm diameter, hood cover of M.S. sheet not less than 0.9 mm thickness and of any size at top and safety devices including mechanical counter arrangement consisting of	22.00	Sqm	39.24/181	4310.00				4310.00		4310.00	0.00	4310.00	94820
28	Providing and fixing mildsteel grill work for windows, ventilator etc. 20Kilogram /Square Metre as per drawing including fixtures, necessary welding and painting with one coat of anticorrosive paint and two coats of oil painting complete.	17.00	Sqm	40.01/192	1845.00				1845.00		1845.00	0.00	1845.00	31365
29	Providing structural steel work in trusses, other similar trussed purlins and members with all bracing, gusset plates etc. as per detailed designs and drawings or as directed including cutting, fabricating, hoisting, erecting fixing in position, Making riveted/ bolted/ welded connection and one coat of anticorrosive paint and over it 2 coats of oil painting approved quality and shade etc. complete.	14.28	M T	23.04/129	105909.00				105909.00		105909.00	0.00	105909.00	1512707
30	Providing and fixing colour coated Zinalume (R) AZ150 (min 150 gms/sq.mt. total on each side) profiled sheets for roofing. The feed material is manufactured out of nominal 0.45 mm Base Metal Thickness (BMT) (0.5 mm TCT), Hi-strength steel with min.550 MPa yield strength, metallic hot dip coated with Aluminium-Zinc alloy (55% aluminium 43.4% zinc 1.6% silicon) with COLORBOND (666.00	Sqm	38.34/173	1095.00				1095.00		1095.00	0.00	1095.00	717225

31	Providing and fixing of colour Zincalume (R) AZ150 (Min150gms/Sq.mt. total on each sides) profiled sheets for Ridges. The feed material is manufactured out of nominal 0.45mm Base Metal Thickness (BMT) (0.5mmTCT), Hi- strength steel with min 550 MP a yield strength, metallic hot dip coated with Aluminum- Zinc alloy (55% aluminium 43.4 % zinc 1.6 % silicon) with COLORBOND (R) steel quality super durable polyester paint coat (with inorganic pigment). The paint shall have a total coating thickness of minimum 25 microns.	36.90	Rum	38.35/174	702.00				702.00		702.00	0.00	702.00	25904
32	Providing and fixing wind opparated tarbo S. S. ventilator system (24 inch dia.) over exsiting roof including cutting of sheet ,propar fixing in position to true line & level with all fixtures & fastning, providing 0.8mm thick FRP sheet for covering area between roof and fan so as to provide waterproof joints with approved water proofing compound making good the roof surface including cleaning etc. complete (General application for all types of roofs for ventilation & day light parpose at terrace [As directed by Engineer in charge].	16.00	Nos	42/374	8680.00				8680.00		8680.00	0.00	8680.00	138880
33	Providing & constructing parapet coping of size 35 x 35 cms in cement mortar 1:4 with conical top and side drops and round finish at A.C. shret joints including finishing the whole with 20 mm thick cement plaster 1:4 with cement finish, 1.	34.20	RMT	R A	1179.00				1179.00		1179.00	0.00	1179.00	40322
34	Filling in plinth with approved excavated stuff obtained from departmental land including watering, compacting etc. complete as directed.(Bd. A.10/262)	163.00	Cum	21.36/117	113.00				113.00		113.00	0.00	113.00	18419
35	Providing Hard Murum cohesive non-swelling materials in plinth in layers of 20 cms etc. complete as directed. [Only compacted thickness is payable][Rd.23/202 & Rd.28/205].	320.00	Cum	RA	508.06				508.06		508.06	0.00	508.06	162580
36	Compacting the Hard Murum, cohesive non swelling materials in plinth upto 200 mm loose with power roller 8 to 10 tonec capacity including artificial watering etc. complete as directed.[Rd.38/210]	1021.00	Sqm	2.31/24	19.00				19.00		19.00	0.00	19.00	19399
37	Providing & laying stone metal layer of 20 cm thickness with 60 mm over size metal 65% and 40 mm size metal 35% with sand or stone chips spreading & leveling handpacking complete.[Rd.22/201,Rd.20/200 &Rd.20/205]	232.00	Cum	RA	1384.36				1384.36		1384.36	0.00	1384.36	321172
38	Compacting oversize & size metal layers combindaly with power roler not less than 8 tonnes including artificial watering & leveling etc. complete as directed (Rd.35/209)	1020.67	Sqm	MR	20.00				20.00		20.00	0.00	20.00	20414
39	Providing and laying in situ cement concrete M20 with tremix treatment for 100 mm thickness for flooring with groove cutting of 4mm wide and 20mm deep with necessary refilling with bitumen and including vaccum dewatering etc. complete.	541.00	Sqm	33.30/158	746.00				746.00		746.00	0.00	746.00	403586
40	Providing treatment of TREMIX vaccum dewatering over prelaid cement concrete 1:2:4 surface including fixing of M.S.Channel formwork as per required size and placing of dowel rod, vibrating the concrete by needle vibrator and leveling by	1.00	Sqm	R A	50.00				50.00		50.00	0.00	50.00	50

41	Providing & fixing ISMC 150 with weight @ 16.80 Kgs/Rmt 20 mm dia & 0.50 m long bolts & nuts @ 1.00 mc/c, M.S. angles for stands of fire bucket including chain fixing in wall applying three coats of oilpaint etc. compl	0.88	MT	23.01/129	89181.00				89181.00		89181.00	0.00	89181.00	87409
42	Providing & Fixing in position M.S. ladder of 45 cms width made out 50 x 50 x 6 mm two angles for rails and M.S. angle stiffeners at three places as directed with M.S. round bars of 20 mm dia for steps @ every 30 cm c/c including fixing	10.00	RMT	RA	805.80				805.80		805.80	0.00	805.80	8058
43	Providing and fixing lightning conductor system comprising of erecting Air-Termination consisting of tubular copperrod of 25 mm dia. 1.2 mm thick with multiple point shead 1.2mt long (HeavyDuty)weldedor clamped to G.I. pipe pole Egrade 50 mm dia of required length with M.S. round brace plate 25 Cndiamand 10mm thick at bottom embedded in cement concrete 1:3:6 d foundation of size 45 cm diam x 45cm Height and providing earthing with copper earth plate of size60x60x0.3cms with cadmiumpl at ed nut bolt sto fixe arthing strip buried inspecially prepared earth pits1.5metre below ground level with 40 Kilogram charcoal and salt with alternate layers of charcoal and salt and G.I. pipe 40 mm dia2meter length buried inearthe up to earthing plateremining portion above ground level forwatering and refillingc ompete Note-Copper strip fromlightning conductor is not considered in this item	1.00	Nos	44.18/214	22189.00				22189.00		22189.00	0.00	22189.00	22189
44	Conveying the materials obtained from excavation including a/l lifts, laying in layers, breaking clods, dressing to the required lines, curves, grades and section for a lead over 50m to 300m from the site of excavation to the site of dep	10.00	Cum	2.25/24	177.00				177.00		177.00	0.00	177.00	1770
45	Conveying the materials obtained from excavation including laying in layers, breaking clods, dressing to the required lines, curves, grades and section for all leads & lifts from the site of excavation to the site of deposition away from building as directed engineer in charge.	10.00	Cum	5 KM lead stat.	220.46				220.46		220.46	0.00	220.46	2205
46	Providing pre-constructural Anti-termite treatment as per I.S. 6313 (Part-II) - 1973 by treating the top surface of plinth filling at the rate of 5 litres of emulsion concentrates of 0.5 percent of Hephoclore per square meter of surface	547.00	sq m	21.24/117	94.00				94.00		94.00	0.00	94.00	51418
47	Providing and fixing in position powder coated aluminium louvered windows / ventilator of various sizes with powder coating as per detailed drawing and specifications including aluminium frames 80 x 38 mm x 1.22 mm box type, 5 mm thick sheet glass louvers, of approved quality etc. complete.	16.41	sq m	39.68/188	3107.00				3107.00		3107.00	0.00	3107.00	50986
TOTAL FOR W.H.BLDG											TOTAL RS		8094900	


V.E. KSHIRSAGAR
 Civil Engineer
 CAJJR/R/2020/APL/00239

FARMISSION FARMERS PRODUCER CO. LTD.
GAT NO-36,DUDHANWADI,TAL-BADNAPUR, DIST- JALNA..

**NAME OF WORK :- PROPOSED CONSTRUCTION OF 1020 MT CAP.WH BLDG WITH ANCILLARY WORKS AT
GUT NO 36 ,DUDHANWADI,TAL-BADNAPUR, DIST- JALNA.**

CAPACITY	1020	MT	SIZE						
LONG WALLS--2	OUTER		1	X	36.39	X	15.70	571.32	
SHORT WALLS--2	INNER		1	X	36.04	X	15.00	540.60	
								Av.	
								Depth	
FOUNDATION DEPTHS									
1	EARTH SOIL 0 TO 1.50							1.00	
2	EARTH SOIL 1.50 to 3.00							0.00	
3	H.M. (0 to 1.50)							0.60	
4	H.M. (1.50 to 3.00)							0.00	
5	H.M.& BOULDER 0 TO 1.50							0.20	
6	H.M.& BOULDER 1.50 to 3.00							0.00	
7	SOFT ROCK							0.00	
8	HARD ROCK							0.00	
							TOTAL	1.80	
								0.15	
CUTTING IN PLINTH									
Asper vision at site									
Ex. Column Footings									
Column C1	2	X	7	X	1.60	X	1.60		
Column No. C3	2	X	2	X	1.60	X	1.80		
Column No.C2 MIDDLE	2	X	2	X	1.60	X	1.60		
Column No. C4 RS	1	X	4	X	0.00	X	0.00		
Column Platform (CP)	4	X	2	X	1.50	X	1.50		
Ex. Ground Beam PANEL									
C1-C1 middle	2	X	6	X	4.52	X	0.60		
C1-C3 END WALL	2	X	2	X	4.52	X	0.60		
C3-C2	2	X	2	X	5.15	X	0.60		
C2-C2 M	2	X	1	X	5.17	X	0.60		
APRON long	1	X	1	X	39.49	X	1.28		
APRON short	1	X	1	X	16.44	X	1.28		
Column Nos. & Size									
Column C1	2	X	7	X	0.30	X	0.50	X 5.60	
Column No.C2	2	X	2	X	0.50	X	0.30	X 5.60	
Column No. C3	2	X	2	X	0.34	X	0.50	x 5.60	
Column No.Platform	4	X	2	X	0.50	X	0.30		
Column near R.S.	1	X	4	X	0.15	X	0.23	X 2.50	
PCC, Tarfelt, BBM, BEAMS PANELS									
C1-C1 middle	2	X	6	X	4.22	X	0.35		
C1-C3 END WALL	2	X	2	X	4.22	X	0.35		
C3-C2	2	X	2	X	4.85	X	0.35		
C2-C2 M	2	X	1	X	4.87	X	0.35		
PB 1	4	X	1	X	4.22	X	0.35	X 0.45	
PB2	4	X	1	X	4.22	X	0.30	X 0.45	
PB3	4	X	2	X	1.20	X	0.30	X 0.30	
Rolling shutters									
V1	2	X	14	X	0.60			X 0.60	
V2	1	X	17	X	1.00			X 0.60	
V3 Up Side of Shutter	1	X	2	X	1.30			X 0.45	
TK. OF C.C. FLOORING									
					0.15				
Plat From	1	X	2	X	4.90			X 1.80	
SheetSize	1	X	2	X	36.39			X 8.15 = 593.16	
Turbo @ Roffing	2	X	8						

FARMISSION FARMERS PRODUCER CO. LTD.
GAT NO-36,DUDHANWADI,TAL-BADNAPUR, DIST- JALNA..

NAME OF WORK :- PROPOSED CONSTRUCTION OF 1020 MT CAP.WH BLDG WITH ANCILLARY WORKS AT GUT NO 36 ,DUDHANWADI,TAL-BADNAPUR, DIST- JALNA.

Sub Work :- Const. of 1020 MT WH Bldg.

MEASUREMENT SHEET

Item Nos & Description of Items	NO.S			LENGTH	BREDTH	DEPTH / HIGHT	TOTAL QUANTITY	Unit
	1	X	2					

1 Excavation for foundation in earth, soil of all types, sand, gravel and soft murum, including removing the excavated material up to a distance of 50 m. beyond the building area and stacking and spreading as directed, dewatering, preparing the bed for the foundation and necessary back filling, ramming, watering including shoring and strutting etc. complete. (Lift upto 1.5 m.) By Mechanical Means Cum

Column footing

Column C1	2	X	7	X	1.60	X	1.60	X	1.00	=	35.84	
Column No. C3	2	X	2	X	1.60	X	1.80	X	1.00	=	11.52	
Column No.C2 MIDDLE	2	X	2	X	1.60	X	1.60	X	1.00	=	10.24	
Column No. C4 RS	1	X	4	X	0.00	X	0.00	X	1.00	=	0.00	
Column Platform (CP)	4	X	2	X	1.50	X	1.50	X	1.00	=	18.00	
For Ground Beam PANEL												
C1-C1 middle	2	X	6	X	4.52	X	0.65	X	0.70	=	24.68	
C1-C3 END WALL	2	X	2	X	4.52	X	0.65	X	0.70	=	8.23	
C3-C2	2	X	2	X	5.15	X	0.65	X	0.70	=	9.37	
C2-C2 M	2	X	1	X	5.17	X	0.65	X	0.70	=	4.70	
									Total		122.58	
									say		123.00	Cum

2 Excavation for foundation in earth, soils of all types, sand,gravel and soft murum, including removing the excavated material upto a distance of 50 metres beyond the building area and stacking and spreading as directed, dewatering, preparing the bed for the foundation and necessary back filling, ramming, watering including shoring and strutting etc. complete. (Lift from 1.5m to 3.0m) By Mechanical Means Cum

Column footing

Column C1	2	x	7	x	1.60	X	1.60	X	0.00	=	0.00	
Column No. C3	2	x	2	x	1.60	X	1.80	X	0.00	=	0.00	
Column No.C2 MIDDLE	2	x	2	x	1.60	X	1.60	X	0.00	=	0.00	
Column No. C4 RS	1	x	4	x	0.00	X	0.00	X	0.00	=	0.00	
Column Platform (CP)	4	x	2	x	1.50	X	1.50	X	0.00	=	0.00	
For Ground Beam PANEL												
C1-C1 middle	2	x	6	x	4.52	X	0.60	X	0.00	=	0.00	
C1-C3 END WALL	2	x	2	x	4.52	X	0.60	X	0.00	=	0.00	
C3-C2	2	x	2	x	5.15	X	0.60	X	0.00	=	0.00	
C2-C2 M	2	x	1	x	5.17	X	0.60	X	0.00	=	0.00	
										=	0.00	
									say	=	0.50	Cum

3 Excavation for foundation in hard murum including removing the excavated material upto distance of 50 metres beyond the building area and stacking and spreading as directed, dewatering, preparing the bed for the foundation and necessary back filling, ramming, watering including shoring and strutting etc. complete. (Lift upto 1.50 m) By Mechanical Means Cum

Column footing

Column C1	2	x	7	x	1.60	X	1.60	X	0.60	=	21.50	
Column No. C3	2	X	2	x	1.60	X	1.80	X	0.60	=	6.91	
Column No.C2 MIDDLE	2	X	2	x	1.60	X	1.60	X	0.60	=	6.14	
Column No. C4 RS	1	X	4	x	0.00	X	0.00	X	0.60	=	0.00	
Column Platform (CP)	4	X	2	x	1.50	X	1.50	X	0.60	=	10.80	
For Ground Beam PANEL												

	C1-C1 middle	2		6	x	4.52	X	0.60	X	0.00	=	0.00	
	C1-C3 END WALL	2	X	2	x	4.52	X	0.60	X	0.00	=	0.00	
	C3-C2	2	X	2	x	5.15	X	0.60	X	0.00	=	0.00	
	C2-C2 M	2	X	1	x	5.17	X	0.60	X	0.00	=	0.00	
										Total	=	45.36	
										say	=	46.00	Cum
4	Excavation for foundation in Hard murum including removing the excavated material upto a distance of 50 metres beyond the building area and stacking and spreading as directed, dewatering, preparing the bed for the foundation and necessary back filling, ramming, watering including shoring and strutting etc. complete. (Lift from 1.5 to 3.0m.) By Mechanical Means												Cum
	Column footing												
	Column C1	2	x	7	x	1.60	X	1.60	X	0.00	=	0.00	
	Column No. C3	2	X	2	x	1.60	X	1.80	X	0.00	=	0.00	
	Column No.C2 MIDDLE	2	X	2	x	1.60	X	1.60	X	0.00	=	0.00	
	Column No. C4 RS	1	X	4	x	0.00	X	0.00	X	0.00	=	0.00	
	Column Platform (CP)	4	X	2	x	1.50	X	1.50	X	0.00	=	0.00	
	For Ground Beam PANEL												
	C1-C1 middle	2	0	6	x	4.52	X	0.60	X	0.00	=	0.00	
	C1-C3 END WALL	2	X	2	x	4.52	X	0.60	X	0.00	=	0.00	
	C3-C2	2	X	2	x	5.15	X	0.60	X	0.00	=	0.00	
	C2-C2 M	2	X	1	x	5.17	X	0.60	X	0.00	=	0.00	
										Total	=	0.00	
										say	=	0.50	Cum
5	Excavation for foundation in hard murum and boulders including removing the excavated material up to a distance 50 metres, beyond the building area and stacking and spreading as directed, dewatering, preparing the bed for the foundation and necessary back filling, ramming, watering including shoring and strutting etc. complete. (Lift upto 1.5m.) By Mechanical Mean												Cum
	Column footing												
	Column C1	2	x	7	x	1.60	X	1.60	X	0.20	=	7.17	
	Column No. C3	2	X	2	x	1.60	X	1.80	X	0.20	=	2.30	
	Column No.C2 MIDDLE	2	X	2	x	1.60	X	1.60	X	0.20	=	2.05	
	Column No. C4 RS	1	X	4	x	0.00	X	0.00	X	0.20	=	0.00	
	Column Platform (CP)	4	X	2	x	1.50	X	1.50	X	0.20	=	3.60	
	For Ground Beam PANEL												
	C1-C1 middle	2	x	6	x	4.52	X	0.60	X	0.00	=	0.00	
	C1-C3 END WALL	2	X	2	x	4.52	X	0.60	X	0.00	=	0.00	
	C3-C2	2	X	2	x	5.15	X	0.60	X	0.00	=	0.00	
	C2-C2 M	2	X	1	x	5.17	X	0.60	X	0.00	=	0.00	
										Total	=	15.12	
										say	=	16.00	Cum
6	Excavation for foundation in Hard murum and boulders including removing the excavated material upto a distance of 50 metres, beyond the building area and stacking and spreading as directed, dewatering, preparing the bed for the foundation and necessary back filling, ramming, watering including shoring and strutting etc. complete. (Lift from 1.5 m to 3.0 m.) By Mechanical Means												Cum
	Column footing												
	Column C1	2	x	7	x	1.60	X	1.60	X	0.00	=	0.00	
	Column No. C3	2	X	2	x	1.60	X	1.80	X	0.00	=	0.00	
	Column No.C2 MIDDLE	2	X	2	x	1.60	X	1.60	X	0.00	=	0.00	
	Column No. C4 RS	1	X	4	x	0.00	X	0.00	X	0.00	=	0.00	
	Column Platform (CP)	4	X	2	x	1.50	X	1.50	X	0.00	=	0.00	
										Total	=	1.00	
										say	=	1.00	Cum
7	Excavation for roadway in earth, soil of all sorts, sand, gravel or soft murum including dressing section to the required grade, camber and side slopes and conveying the excavated materials with all lifts upto a lead of 50m. and spreading for embankment or stacking as directed.												Cum
	For Wh bldg.	1	X	1	X	36.04	X	15.00	X	0.10	=	54.06	
										TOTAL	=	54.06	
										SAY	=	55.00	Cum

8	Excavation for roadway in hard murum and boulder including dressing section to the required grade, camber and side slopes and conveying the excavated materials with all lifts upto a lead of 50m. and spreading for embankment or stacking as directed.																			Cum
	For Wh bldg.	0	X	1	X	36.04	X	15.00	X	0.30	=	0.00								
										TOTAL	=	0.00								
										SAY	=	<u>1.00</u>								Cum
9	Providing and laying Cast in situ/Ready Mix cement concrete in M-10 of trap/ granite/ quartzite/ gneiss metal for foundation and bedding including bailing out water, Steel centering, formwork, laying/pumping, compacting, roughening them if special finish is to be provided, finishing if required and curing complete, with fully automatic micro processor based PLC with SCADA enabled reversible Drum Type mixer/concrete Batch mix plant (Pan mixer) etc. complete. With fine aggregate (Crushed sand VSI Grade)																			Cum
	Bed concrete in WH.	1	X	1	X	36.04	X	15.00	X	0.10	=	54.06								
	Column footing																			
	Column C1	2	x	7	x	1.50	X	1.50	X	0.10	=	3.15								
	Column No. C3	2	X	2	x	1.50	X	1.70	X	0.10	=	1.02								
	Column No. C2 MIDDLE	2	X	2	x	1.50	X	1.50	X	0.10	=	0.90								
	Column No. C4 RS	1	X	4	x	0.00	X	0.00	X	0.10	=	0.00								
	Column Platform (CP)	4	X	2	x	1.40	X	1.40	X	0.10	=	1.57								
	For Ground Beam PANEL																			6.64
	C1-C1 middle	2	x	6	x	4.52	X	0.40	X	0.10	=	2.17								
	C1-C3 END WALL	2	X	2	x	4.52	X	0.40	X	0.10	=	0.72								
	C3-C2	2	X	2	x	5.15	X	0.40	X	0.10	=	0.82								
	C2-C2 M	2	X	1	x	5.17	X	0.40	X	0.10	=	0.41								
										Total	=	64.83								
										say	=	<u>65.00</u>								Cum
10	Providing uncoursed rubble masonry of trap / granite / quartzite / gneiss stones in cement mortar 1:6 in foundation and plinth of inner walls / in plinth of external walls including bailing out water manually , striking joints on un exposed faces and watering etc. complete																			Cum
	APRON long	0	X	2	X	39.49	X	0.45	X	0.35	=	0.00								
	APRON short	0	X	1	X	16.44	X	0.45	X	0.35	=	0.00								
	U.C.R. of ramp	0	X	2	X	7.50	X	0.45	X	1.25	=	0.00								
										Total	=	0.00								
	Provision									say	=	<u>1.00</u>								Cum
11	Providing second class Burnt Brick masonry with conventional/ I.S. type bricks in cement mortar 1:6 in foundations and plinth of inner walls/ in plinth external walls including bailing out water manually , striking joints on unexposed faces, raking out joints on exposed faces and watering etc. Complete.																			Cum
	For PANEL In Plinth																			
	C1-C1 middle	2	X	6	X	4.22	X	0.35	X	0.90	=	15.95								
	C1-C3 END WALL	2	X	2	X	4.22	X	0.35	X	0.90	=	5.32								
	C3-C2	2	X	2	X	4.85	X	0.35	X	0.90	=	6.11								
	C2-C2 M	2	X	1	X	4.87	X	0.35	X	0.90	=	3.07								
										Total	=	30.45								
										say	=	<u>31.00</u>								Cum
12	Providing & laying 35 cms wide single layer tarfelt by applying initial coat of shalibond @1kg/sqm fixing in place by wire nails for D.P.C. at plinth as directed by Engineer in charge.																			Sqm
	For PANEL In Plinth																			
	C1-C1 middle	2	X	6	X	4.22	X	0.35	X		=	17.72								
	C1-C3 END WALL	2	X	2	X	4.22	X	0.35	X		=	5.91								
	C3-C2	2	X	2	X	4.85	X	0.35	X		=	6.79								
	C2-C2 M	2	X	1	X	4.87	X	0.35	X		=	3.41								
										Total	=	33.83								
										say	=	<u>34.00</u>								Sqm
	TMT Steel																			

									Total	29.63	
									Net	750.71	
									Sav	<u>751.00</u>	Sqm
22	Providing internal cement plaster 12 mm thick in Single coats in cement mortar 1:4 without neeru finish, to concrete, brick surface, in all positions including scaffolding and curing etc.complete.										Sqm
	Inside										
	Long wall										
	short wall	1	X	2	X	36.39	X	5.60	=	407.57	
	Gable wall	1	X	2	X	15.70	X	5.60	=	175.84	
	0	1	X	2	X	15.70	X	0.95	=	29.83	
		1	X	3	X	4.85	X	2.50	=	36.38	
	Deduction										
	Rolling shutters								Total	613.24	
	V1	4	X	1	X	2.10	X	2.55	=	21.42	
	V2	0.5	X	14	X	0.60	X	0.60	=	2.52	
	V3	0.5	X	17	X	1.00	X	0.60	=	5.10	
		0.5	x	3	X	1.30	X	0.23	X	=	0.45
									Dedu.	29.49	
									Net	583.75	
									Sav	<u>584.00</u>	Sqm
23	Providing internal cement plaster 20mm thick in Single coats in cement mortar 1:4 with neeru finish, to concrete, brick surface, in all positions including scaffolding and curing etc.complete.										Sqm
	Plinth										
	Long wall	1	X	2	X	36.39	X	0.90	=	65.50	
	Short wall	1	X	2	X	15.70	X	0.90	=	28.26	
	Platforms Taper side	1	X	3	X	4.22	X	0.30	=	3.80	
	Bottom	1	X	3	X	4.22	X	0.80	=	10.13	
									Total	107.69	
									Sav	<u>108.00</u>	Sqm
24	Providing and applying three coat s of water proof cement paint of approved manufacture and of approved colour to new plastered surfaces includings caffolding if necessary,cleaning and preparing the surface,watering for two days etc. complete.										Sqm
	Inside										
	Long wall	1	X	2	X	36.04	X	5.60	=	403.65	
	Short wall	1	X	2	X	15.00	X	5.60	=	168.00	
	Gable	1	X	2	X	15.00	X	1.00	=	30.00	
	0	1	X	3	X	4.85	X	2.50	=	36.38	
	Dedu.										
	Rolling shutters	4	X	1	X	2.10	X	2.55	Total	638.02	
	V1	2	X	14	X	1.00	X	0.60	=	21.42	
	V2	1	X	17	X	1.00	X	0.60	=	16.80	
									=	10.20	
									Total	48.42	
									Net	589.60	
									Sav	<u>590.00</u>	Sqm
25	Providing and applying two coat s of exterior acraylic emulsion paint confirming to corresponding I.S. of approved manufacture and of approved colour to the plastered surfaces including cleaning,preparing the plaster surface,applying primer coat,scaffolding if necessary , and watering the surface for two days etc complete										Sqm
	Outside										
	Long wall	2	X	1	X	36.39	X	5.60	=	407.57	
	short wall	2	X	1	X	15.70	X	5.60	=	175.84	
	Gable wall	2	X	0.5	X	15.70	X	1.00	=	15.70	
	Column offset C1	2	X	7	X	0.22	X	6.50	=	20.02	
	C3 offcet	2	X	2	X	0.22	X	6.50	=	5.72	
	C2 offcet	2	X	2	X	0.22	X	6.50	=	5.72	
	0	1	X	3	X	4.85	X	2.50	=	36.38	
									Total	630.57	
	Deduction										
	Rolling shutters	4	X	1	X	2.10	X	2.55	=	21.42	
	V1	0.5	X	14	X	0.60	X	0.60	=	2.52	
	V2	0.5	X	17	X	1.00	X	0.60	=	5.10	
									Dedu.	29.04	
									Net	601.53	

								Say	602.00	Sqm	
26	Providing and applying two coats (exterior quality) of flat oil paint of approved colour and shade to the plastered surface in buildings and workshops including scaffolding if necessary, cleaning the surface and preparing surface etc. complete. (excluding primer coat)									Sqm	
	Plinth										
	Long wall								=	65.50	
	Short wall	2	X	1	X	36.39	X	0.90	=	28.26	
	Stack lines	2	X	1	X	15.70	X	0.90	=		
	Long								=	4.80	
	Short	2	X	4	X	6.00	X	0.10	=	7.20	
		2	X	4	X	9.00	X	0.10	=		
									Total	105.76	
									Say	106.00	
27	Providing and fixing rolling shutter fabricated from steel laths of minimum thickness 0.9 mm with lock plate of 3.15 mm thickness reinforced with 35 x 35 x 5 mm angle section fitted with sliding bolts and handles for both sides, deep M.S. channel section of depth and thickness not less than 65 mm and 3.15 mm respectively with hold fast arrangements, M.S. Bracket plate 300 x 300 x 3.15 mm minimum size and shape with square bar, suspension shaft of minimum 32 mm diameter, hood cover of M.S. sheet not less than 0.9 mm thickness and of any size at top and safety devices including mechanical gear operation arrangement consisting of worm gear wheels and worms of high grade cast iron or mild steel and one coat of red lead primer etc. complete. (I.S. 62481979) (Without mechanical gear)									Sqm	
	Rolling shutters	4	X	1	X	2.10	X	2.55	x	1.00	21.42
									Total	21.42	
									Say	22.00	
28	Providing and fixing mildsteel grill work for windows,ventilatorsetc. 20Kilogram/Square Metre as per drawing including fixtures,necessary welding and painting with one coat s of anticorrosive paint and two coats of oil painting complete.									Sqm	
	V1	1	X	14	X	0.60	X	0.60	=	5.04	
	V2	1	X	17	X	1.00	X	0.60	=	10.20	
	V3 Up Side of Shutter	1	X	2	X	1.30	X	0.45	=	1.17	
									Total	16.41	
									Say	17.00	
29	Steel Work in Angular & Purline Providing structural steel work in trusses, other similar trussed purlins and members with all bracing, gusset plates etc. as per detailed designs and drawings or as directed including cutting, fabricating, hoisting, erecting fixing in position, Making riveted/ bolted/ welded connection and one coat of anticorrosive paint and over it 2 coats of oil painting approved quality and shade etc. complete.									MT	
	Total Area Godown										
	Main bldg.	36.39	X			571.32	X	25.00	=	14283.08	
		15.70				Sq Area		KG	Total	14.28	
									Say	14.28	
30	Providing and fixing colour coated Zinalume (R) AZ150 (min 150 gms/sq.mt. total on each side) profiled sheets for roofing. The feed material is manufactured out of nominal 0.45 mm Base Metal Thickness (BMT) (0.5 mm TCT), Hi-strength steel with min.550 MPa yield strength, metallic hot dip coated with Aluminium-Zinc alloy (55% aluminium 43.4% zinc 1.6% silicon) with COLORBOND (R) steel quality super durable polyester paint coat (with inorganic pigment). The paint shall have a total coating thickness of nominal 35 um, comprising of nominal 25 um exterior coat on top surface and nominal 10 um reverse coat on back surface. Profile sheet shall have nom. 950-1050 mm effective cover width and nominal 25-30 mm deep ribs with subtle square fluting in the five pan at nominal 180-250 mm centerto-center. The end rib shall be designed for anti-capillary groove. and return leg. The feed material should have coil manufacturers product details marked a regular interval. Including fasteners with min. fastened with min. 25 um Zinc-Tin alloy coated, Hex head, self-drilling screw etc. complete. (weight of profile 4.52 Kilogram/Square Metre)									Sqm	

Main bldg.	1	X	2	X	36.39	X	8.55		=	622.27	
Platform	1	X	4	X	4.50	X	1.80		=	32.40	
									Total	654.67	
									Say	<u>655.00</u>	Sqm
31 Providing and fixing of colour Zinalume (R) AZ150 (Min150gms/Sq.mt. total on each sides) profiled sheets for Ridges. The feed material is manufactured out of nominal 0.45mm Base Metal Thickness (BMT) (0.5mmTCT), Hi- strength steel with min 550 MP a yield strength, metallic hot dip coated with Aluminum- Zinc alloy (55% aluminium 43.4 % zinc 1.6 % silicon) with COLORBOND (R) steel quality super durable polyster paint coat (with inorganic pigment). The paint shall have a total coating thickness of noiminal 35 um, comprising of nominal 25 um exerior coat on top surface & nominal 10 um reverse coat on back surfaces. Profile sheet shall have nom 950-1050 mm effective cover width & nominal 25-30 mm dip ribs with suitable square fluting in the 5 pan @ nominal 180-250 mm c/c. The end rib shall be designed for anticapillary groove & return leg. The fid material should have coil manufacturers product detailes marked at regular interval. including fasteners with minimum fastened with minimun 25 um Zink- tin alloy coated, hex headed, self drilling screw etc. complete. [As directed by Engineer in charge]. (D.S.R.33 A /71) (For 0.60 m wide Ridge)											Rum
Main bldg.	1	X	1	X	36.89	X	1.00		=	36.89	
									Total	36.89	
									Sav	<u>36.90</u>	Rum
32 Providing and fixing wind oppareted tarbo S S. ventiletar system (24 inch dia.) over exsiting roof including cutting of sheet ,propar fixing in position to true line & level with all fixtures & fastning, providing 0.8mm thick FRP sheet for covering area between roof and fan so as to provide waterfoof joints with approved water proffing compound making good the roof surface including cleaning etc. complete (General application for all types of roofs for ventilation & day light parpose at terrace [As directed by Engineer in charge]. (Jalgaon D.S.R.304 /123)											Nos
For W H Bldg	2	x	8	x	1.00	x	1.00	1.00	=	16.00	
								Total	=	16.00	
								say	=	<u>16.00</u>	Nos
33 Providing & constructing parapet coping of size 35 x 35 cms in cement mortar 1:4 with conical top and side drops and round finish at A.C. sheet joints including finishing the whole with 20 mm thick cement plaster 1:4 with cement finish. 1 parapet coping											RMT
	2	X	2	X	8.55				=	34.20	
								Total	=	34.20	
								Say	=	<u>34.20</u>	RMT
34 Filling in plinth with approved excavated stuff obtained from departmental land including watering, compacting etc. complete as directed.(Bd. A.10/262)											Cum
Qty received from excavation	1	X	1	X	36.04	X	15.00	X	0.30	=	162.18
item no 3	46.00				6.64						39.36
item no 5	16.00				35.41						-19.41
Qty received from excavation								Total	=	162.18	
								Sav	=	<u>163.00</u>	Cum
35 Providing Hard Murum cohesive non-swelling materials in plinth in layers of 20 cms etc. complete as directed. [Only compacted thickness is payable][Rd.23/202 & Rd.28/205].											Cum
Main bldg.	1	X	1	X	35.44	X	14.40	X	0.60	=	306.20
ForCabin	1	X	1	X	4.85	X	4.50	X	0.60	=	13.10
								Total	=	319.30	
								Sav	=	<u>320.00</u>	Cum
36 Compacting the Hard Murum, cohesive non swelling materials in plinth upto 200 mm loose with power roller 8 to 10 tonee capacity including artificial watering etc. complete as directed.[Rd.38/210]											Sqm
Main bldg.	1	X	2	X	35.44	X	14.40		=	1020.67	
								Total	=	1020.67	
								Sav	=	<u>1021.00</u>	Sqm

37	Providing & laying stone metal layer of 20 cm thickness with 60 mm over size metal 65% and 40 mm size metal 35% with sand or stone chips spreading & leveling handpacking complete. [Rd.22/201, Rd.20/200 & Rd.20/205]												Cum
	Main bldg.												
	Main bldg. Inner Periferi	1	X	1	X	35.44	X	14.40	X	0.40	=	204.13	
		1	X	1	X	36.04	X	0.60	X	0.60	=	12.97	
	For Cabin	1	X	1	X	14.40	X	0.60	X	0.60	=	5.18	
		1	X	1	X	4.85	X	4.50	X	0.40	=	8.73	
										Total		231.02	
										Say		<u>232.00</u>	Cum
38	Compacting oversize & size metal layers combinadly with power roler not less than 8 tonnes including artificial watering & leveling etc. complete as directed (Rd.35/209)												Sqm
	Main bldg.	1	X	2	X	35.44	X	14.40			=	1020.67	
										Total		1020.67	
										Say		<u>1020.67</u>	Sqm
39	Providing and laying in situ cement concrete M20 with tremix treatment for 100 mm thickness for flooring with groove cutting of 4mm wide and 20mm deep with necessary refilling with bitumen and including vaccum dewatering etc. complete.												Sqm
	Main bldg.	1	X	1	X	36.04	X	15.00	X	1.00	=	540.60	
										Total		540.60	
										Say		<u>541.00</u>	Sqm
40	Providing treatment of TREMIX vaccum dewatering over prelaid cement concrete 1:2:4 surface including fixing of M.S.Channel formwork as per required size and placing of dowel rod, vibrating the concrete by needle vibrator and leveling by												Sqm
	Main Bldg.	1	X	1	X	36.04	X	15.00			=	1.00	
	Provision									Total		1.00	
										Say		<u>1.00</u>	Sqm
41	Providing & fixing ISMC 150 with weight @ 16.80 Kgs/Rmt 20 mm dia & 0.50 m long bolts & nuts @ 1.00 mc/c, M.S. angles for stands of fire bucket including chain fixing in wall applying three coats of oilpaint etc. compl												MT
	For Platforms @ 12.10 kg/m	4	X	2	X	6.62	X	16.80	Kg/M.		=	889.73	
	Holdfasts 20 mm dia @ 2.50 kg/m	6	X	12	X	0.50	X	2.50	Kg/M.		=	90.00	
	L50x50x6 mm for fire bucket. @ 4.50 kg/m										=	0.40	
										Total		0.98	
										Say		<u>0.98</u>	MT
42	Providing & Fixing in position M.S. ladder of 45 cms width made out 50 x 50 x 6 mm two angles for rails and M.S. angle stiffeners at three places as directed with M.S. round bars of 20 mm dia for steps @ every 30 cm c/c including fixing												RMT
	Provision	1	X	1	X	10.00					=	10.00	
										Total		10.00	
										Say		<u>10.00</u>	RMT
43	Providing and fixing lioghtening conductor system comprising of erecting Air-Termination consisting of tubular copperrod of 25 mm dia.1.2 mm thick with multiple point shead 1.2mt.long (HeavyDuty)weldedor clamped to G.I .pipe pole Bgrade 50 mm dia of requiredl ength with M.S.round bnase plate 25 Cmdiamand 10mm thick at bottom embeded in cement concrete 1:3:6 d foundation of size 45 cm diam x 45cm Height and providing earth ing with copper earth plate of size60x60x0.3cms with cadmiumpI at ed nut bolt sto fixe arthing strip burried inspecially prepared earth pits1.5metre below ground level with 40 Kilogram charcoal and salt with altemate layers of charcoal and salt and G.I.pipe 40 mm dia2meter length burried inearthe up to earthling plateremining portion above ground level forwatering and refillingc ompete Note-Copper strip fropmlightening conductor is not considered in this item.												Nos
	For Main Bldg.	1	X	1	X	1.00					=	1.00	
	Provision									Total		1.00	
										Say		<u>1.00</u>	Nos
44	Conveying the materials obtained from excavation including all lifts, laying in layers, breaking clods, dressing to the required lines, curves, grades and section for a lead over 50m to 300m from the site of excavation to the site of dep												Cum
										Total		<u>10.00</u>	

AS per Item No	1 Excavation	123.00					Say	10.00	Cum	
45 Conveying the materials obtained from excavation including laying in layers, breaking clods, dressing to the required lines, curves, grades and section for all leads & lifts from the site of excavation to the site of deposition away from building as directed engineer in charge.										
								Total	10.00	Cum
								Say	10.00	
46 Providing pre-constructional Anti-termite treatment as per I.S. 6313 (Part-I) - 1973 by treating the top surface of plinth filling at the rate of 5 litres of emulsion concentrates of 0.5 percent of Hephoclore per square meter of surface.										
Main Bldg.										
	1	X	1	X	36.39	X	15.00	=	546.85	
								Total	546.85	
								Say	547.00	
47 Providing and fixing in position powder coated aluminium louvered windows / ventilator of various sizes with powder coating as per detailed drawing and specifications including aluminium frames 80 x 38 mm x 1.22 mm box type, 5 mm thick sheet glass louvers, of approved quality etc. complete.										
Sqm										
V1	1	X	14	X	0.60	X	0.60	=	5.04	
V2	1	X	17	X	1.00	X	0.60	=	10.20	
V3 Up Side of Shutter	1	X	2	X	1.30	X	0.45	=	1.17	
								Total	16.41	
								Say	16.41	
Sqm										

Official

V.E. KSHIRSAGAR
Civil Engineer
CAJRR/2020/APL/00239

V.E. KSHIRSAGAR
 Civil Engineer
 CAJ/R/2020/APL/00239

Item No.	Item No & Description of item	Executed Quantity	Quantity of Material for Royalty Cu. M				Total	1885	378.70	0.43	22.993	101.636	306.240	384.000	0.000
			Cement in bags	SAND	METAL Quantity	MURUM									
	Sub Work :- Const. of 1020 MT WH Bldg.														
11	Providing second class Burnt Brick masonry with conventional 1:5 type bricks in cement mortar 1:6 in foundations and	31	1.58	48.98	0.32	9.920									
19	Providing second class Burnt Brick masonry with conventional 1:5 type brick since mortar 1:6 in superstructure	100	1.58	158.00	0.32	32.000									
21	Providing sand faced plaster externally in cement mortar using approved screened sand, in all positions including base coat of	751	0.17	127.67	0.025	18.775									
22	Providing internal cement plaster 12 mm thick in single coats in cement mortar 1:4 without neeru finish, to concrete, brick	584	0.17	99.28	0.025	14.600									
23	Providing internal cement plaster 20mm thick in single coats in cement mortar 1:4 with neeru finish, to concrete, brick	108	0.22	23.44	0.031	3.348									
35	Providing Hard Murum cohesive non-swelling materials in plinth in layers of 20 cms etc. complete as directed. [Only	320													
37	Providing & laying stone metal layer of 20 cm thickness with 60 mm over size metal 65% and 40 mm size metal 35% with sand	232													
39	Providing and laying in situ cement concrete M20 with tremix treatment for 100 mm thickness for flooring with groove	54	7.00												

NAME OF WORK :- PROPOSED CONSTRUCTION OF 1020 MT CAP. WH BLDG WITH ANCILLARY WORKS AT GUT NO 36, DUDHANWADI, TAL-BADNAPUR, DIST-
 GAT NO-36, DUDHANWADI, TAL-BADNAPUR, DIST- JALNA.
 FARMISION FARMERS PRODUCER CO. LTD.
 Sub Work III :- Royalty Charges

FARMISSION FARMERS PRODUCER CO. LTD.
 GAT NO-36, DUDHANWADI, TAL-BADNAPUR, DIST - JALNA..
 NAME OF WORK :- PROPOSED CONSTRUCTION OF 1020 MT CAP. WH BLDG WITH ANCILLARY WORKS AT GUT NO 36, DUDHANWADI, TAL-BADNAPUR, DIST-
 JALNA.

Royalty Charges Recovery Statements

Sr. No	Particular	Requar Quantity In Cum	Requar Quantity In Brass	Royalty	Distt. Mineral Founda tion		Royalty Charges @ Rs SAND&144.160 Cth,Min	
					Surcharge	10%		
1	SAND	101.64	35.91	211.95	4.24	21.20	237.384	
2	METAL Hand broken	306.24	108.21	211.95	4.24		216.189	
3	MURUM	384.00	135.69	211.95	4.24		216.189	
4	RUBBLE	0.00	0.00	211.95	4.24		216.189	
Total Amount Rs.								173348.94

Say Rs. 173349.00



V.E. KSHIRSAGAR
 Civil Engineer
 CAJ/R/R/2020/APL/00239

R A Sheet

Item No

35.00 Providing Hard Murum cohesive non-swelling materials in plinth in layers of 20 cms etc. complete as directed. [Only compacted thickness is payable][Rd.23/202 &

Consider 1.00 cu m quantity

1 - Basic rate 25/383	1.00	288.00	288.00
2 - Lead Charges	5.00	220.06	220.06

3 - Spreading charges	0.00	49.00	0.00
Total Rs			508.06

4 - For compaction 20 % OF H.M.cost			
Grand total Rs.			508.06

Deduction for stacking charges			
I N 3/255	1.20	0.00	0.00

Net Rs			508.06
--------	--	--	--------

Therefore rate per cu m will be say	Rs		508.06
-------------------------------------	----	--	--------

Item No 37.00 P Providing & laying stone metal layer of 20 cm thickness with 60 mm over size metal 65% and 40 mm size metal 35% with sand or stone chips spreading & leveling

oversize & size metal filling in plinth

Consider 1.00 cu m quantity of 80 mm O.S.metal

1 - Basic rate	1.00	885.00	885.00
----------------	------	---------------	--------

2 - Lead Charges	10.00	430.31	430.31
------------------	-------	---------------	--------

3 - Spreading charges	0.00	49.00	0.00
-----------------------	------	--------------	------

Total Rs			1315.31
----------	--	--	---------

4 - Add for compaction 15 %			0.00
-----------------------------	--	--	------

Grand Total Rs.			1315.31
-----------------	--	--	---------

Deduction for stacking charges			
2./255	1.32	0.00	0.00

Net Rs			1315.31
--------	--	--	---------

Therefore rate per cu m will be say Rs		1315.31	854.95
--	--	----------------	---------------

Consider 1.00 cu m quantity of 40 mm O.S.metal

1 - Basic rate	1.00	885.00	885.00
----------------	------	---------------	--------

lead charges-	1.00	430.31	430.31
---------------	------	---------------	--------

3 - Spreading charges	0.00	49.00	0.00
-----------------------	------	--------------	------

Total Rs			1315.31
----------	--	--	---------

4 - Add for compaction 15 %			197.30
-----------------------------	--	--	--------

Grand Total Rs.			1512.61
-----------------	--	--	---------

Deduction for stacking charges			
2./255	1.32	0.00	0.00

Net Rs			1512.61
--------	--	--	---------

Therefore rate per cu m will be say Rs		1512.61	529.41
--	--	---------	--------

1384.36

1384.36

Say Rs

Item No 40.00 Providing treatment of TREMIX vaccum dewatering over prelaid cement concrete 1:2:4

Laying charges for form work, running vibrator, laying suction matt, dewatering etc.

Consider 1.0 sq m area

1 - Market rate as per .c	1.00	55.00	50.00		
---------------------------	------	--------------	-------	--	--

2 - Transportation charç	0.00	0.83	0.00	2000.0	2406.69	0.83
--------------------------	------	-------------	------	--------	---------	------

3- Generator Hire charç	0.00	4.16	0.00	5.00	2000.00	10000.00
-------------------------	------	-------------	------	------	---------	----------

Total Rs.			50.00			
-----------	--	--	-------	--	--	--

4. Diesel charges 5 day	0.00	1.88	0.00	100.00	45.24	4524.00
-------------------------	------	-------------	------	--------	-------	---------

5 - Overheads & contractors pfofit	10 %		0.00			
------------------------------------	------	--	------	--	--	--

Grand Total Rs. 50.00
 Therefore rate per sq m will be say Rs 50.00

Item No				
42.00	P & F M.S.ladder			
	Consider 4.00 m length	4.00 Rm		
	1 - M.S.angle 50 x 50 x 6 mm			
	[2 x 4.00 + 2 x 0.60 + 2 x 0.73 + 2 x 0.85 = 12.36Rm			
	Weight	12.36 x 4.5 = 55.62 Kgs		
	2 - M.S. bar 20 mm dia @ 30 cm c/c			
	15 x 0.45 x 2.50	= 16.88 Kgs		
	3 - Hold fasts 12mm dia			
	2 x 3 x 0.20 x 0.90	= 1.08 Kgs		
	Total quantity	= 73.58 kgs		
	#REF!	73.58	40.00	2943.20
	4 - C.C. 1:2:4 for bed blocks			
	6 x 0.20 x 0.20 x 0.35 = 0.08 cum			
	Rate as per I N 12 of S	0.08	3500.00	280.00
	Grand Total Rs			3223.20
	Therefore rate per R M will be			805.80
	Say			805.80

Item No				
33.00	Providing & constructing parapet coping of size 35 x 35 cms in cement mortar 1:4 with c			
	Consider 1.00 m length			
	1 - Brickwork in CM 1:4			
	1 x 1.00 x 0.35 x 0.20	= 0.70 cum		
	1 x 1.00 x 0.40 x 0.075	= 0.03 cum		
	1 x 1/2 x 1.00 x 0.40 x 0.075	= 0.015 cum		
	Total quantity	= 0.115 cum		
	Rate as per I N 11 of S	0.12	7570.00	870.55
	Add cement diff. bet. CM 1:4 & 1:6 (2.60 - 1.44)=1.16 Bag			
	[1.16 x 0.115] =	0.13	290.00	38.69
	2 - Cement plaster 20 mm tk in C M 1:4 with slurry			
	1 x 1.00 x 2 X [0.20 + 0.025 + 0.075 + 0.21] = 1.02			
	1.02 sq m @	1.02	264.00	269.28
	3 - Butt joint in C M 1:4 with slurry finish			
	1/2 x 0.15 x 0.15 x 1.00 = 0.01125 / 0.02 = 0.5625sqm			
	0.5625sq m @	0.00	264.00	0.00
	Grand Total			1178.52
	Therefore rate per R M will be			1179.00

(Signature)
V.E. KSHIRSAGAR
 Civil Engineer
 CAJJR/R/2020/APL/00239

FARMISSION FARMERS PRODUCER CO. LTD.

GAT NO-36,DUDHANWADI,TAL-BADNAPUR, DIST- JALNA..

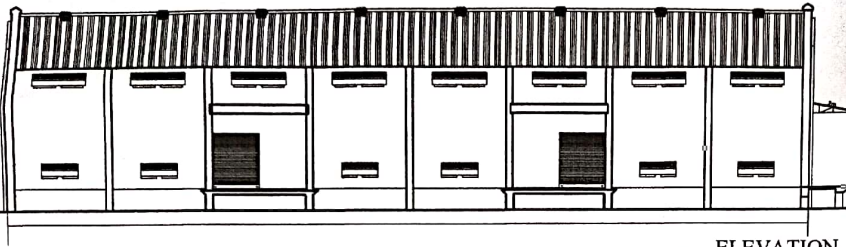
Sub work IV:- Material Lab Testing charges

NAME OF WORK :- PROPOSED CONSTRUCTION OF 1020 MT CAP.WH BLDG WITH ANCILLARY WORKS AT GUT NO 36 ,DUDHANWADI,TAL-BADNAPUR, DIST- JALNA.

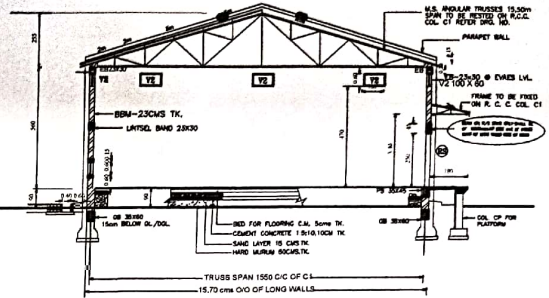
Statement Showing the details of requirement of Lab. Tests to be carried out:-

Sr. No.	Particulars	Quantity	Unit	Tests to be carried out	Nos. of tests	Rate per test	Amount	Remarks
1	Cement	1885	MT	Fineness, Consistency, Setting Time, Compressive strength, Specific gravity.	1	7540	15080	one test per 1000 Bag
2	Concrete M-20	107.87	cum	i) Mix Design with all tests on basic materials	0	-	---	One set for mix design
				ii) Concrete cube compressive strength	6	1380	16560	Up to 50 Cum 4 & thereafter for each 50 Cum one additional set
3	Bricks	131	cum	Water Absorption (Set of 5 Bricks), Compressive strength (Set of 5 Bricks), Efflorescence (Set of 5 Bricks)	1	1900	3800	one test per 50000 Nos. of bricks
6	Sand	101.64	cum	Fineness Modulus, silt content.	1	1950	3900	1 test per source
7	Murum	384.00	cum	i) Gradation	2	600	2400	1 test per 400 Cum.
				ii) Atterberg Limit	0	1100	0	1 test per 400 Cum.
				iii) Moisture content prior to compaction	0	800	0	1 test per 400 Cum.
				iv) Density of compacted layer	0	1000	0	1 test per 1000 Sq.m
				v) Proctor Test	0	1650	0	1 test per 3000 Cum.
TOTAL							41740	

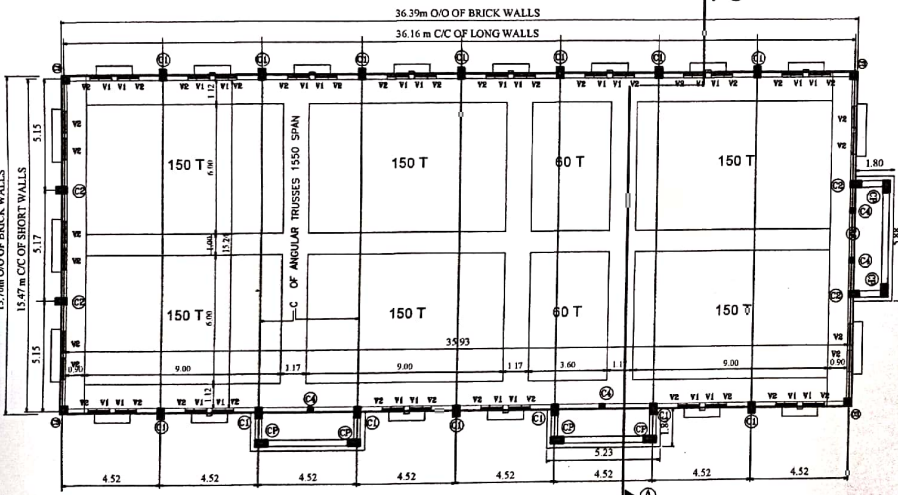
V.E. Kshirsagar
V.E. KSHIRSAGAR
Civil Engineer
CAJJR/R/2020/APL/00239



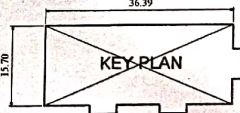
ELEVATION



SECTION 'A-A'



PLAN FOR 1/1020 MT. WH.
UNIT NO. 1



KEY PLAN

SCHEDULE OF R. C. C. COLUMNS.

TYPE	SIZE	NO.	REMARKS
C1	30 x 50	14	@ LONG WALLS
C2	30 x 50	4	@ GABLE WALLS
C3	34 x 50	4	@ GABLE WALLS
C4	15 x 34	4	TO BE POSTED ON DB @ RS PANELS
CP	57 x 30	6	FOR PLATFORMS BELOW BEAM.

SCHEDULE OF ROLLING SHUTTERS/VENTILATORS

TYPE	SIZE (IN CMS)	NO.	DISCUSSION
RS	210x255	3	PULL AND PUSH TYPE FIXED FORM INSIDE
V1	60 x 60	28	STEEL VENTILATORS FULLY GLAZED WITH SHUTTERS (BOX HINGES) 8mm SQ. MESH 16 SMC. TO BE FIXED BY 19mm/3mm M.S. PLAT @ 12mm SQ. BARS (7 NOS.) IN VERTICAL POSITION @ 10cm C/C FIXED TO FRAME FROM OUTSIDE.
V2	100 x 60	38	-----DO-----

PROPOSED CONST. OF 1/1020 MT. CAPACITY WH. BUILDING WITH ANCILLARY WORK UNIT NO. 1 WAREHOUSE COMPLEX GAT NO. 36 AT :- DUDHANWADI, TAL :- BADNAPUR DIST :- JALNA

Ethart
V.E. KSHIRSAGAR
Civil Engineer
CAJJR/R/2020/APL/00239

BUILT UP AREA CALCULATIONS

	SQ. M.
MAIN BUILDING	36.39m x 15.70m = 571.32
A) 0.33m x 1.80m	
TOTAL PLATFORMS AREA	= 6.59 sq. m. x 2 NOS. = 13.18
B) 0.88m x 1.80m	
TOTAL PLATFORMS AREA	= 10.584 sq. m. x 1 NOS. = 10.584
GROSS BUILT UP AREA	601.09 sq. m.