



ESTIMATE FOR

NAME OF WORK :

*Construction of Pragati Community
Managed Resources Center, Contrution of
Turmeric Collection Center Under
SMART Programme in Gat No.85 At-
Nune Tal & Dist .-Satara.*

Rs. 999827.00

ESTIMATE



Division

Sanction Estimate No.

Fund Head.

Major Head.

Minor Head.

Service Head.

Departmental Head.

**NAME OF WORK :Construction of Pragati Community Managed Resources Center, Contrution of
Turmeric Collection Center Under SMART Programme in Gat No.85 At- Nune Tal & Dist .-Satara.**

Rs. 999827.00

Administratively Approved under

..... No. Dt.

Technically Sanctioned under

..... No. Dt.

Estimate prepared by :

and checked by :

Call or Authority

GENERAL DESCRIPTION

As per Separate Sheet attached

NAME OF WORK :Construction of Pragati Community Managed Resources Center, Contrution
Turmeric Collection Center Under SMART Programme in Gat No.85 At- Nune Tal & Dist .-Satara.



RECAPICULATION SHEET

SUB ESTIMATE

1	ESTIMATE COST	Rs.	874812.00
2	Royalty Charges		5664.00
3	Quality Control Charges		5625.00
	Total	Rs.	886101.00
4	Add 12.00% GST Charges		104977.44
5	Add 1.00% Insurance Charges		8748.12
	Total	Rs.	999826.56
	Say	Rs.	999827.00



NAME OF WORK : Construction of Pragati Community Managed Resources Center, Construction of Turmeric Collection Center Under SMART Programme in Gat No.85 At- Nune Tal & Dist. - Satara

ABSTRACT

Quantity	Unit	Item	Rate	Unit	Amount
19.66	Cum	Item No.1 -Excavation for foundation in earth .soils of all types, sand, gravel and soft murum, including removing the excavated material up to a distance of 50 Meter beyond the bulding area & stacking and spreading as directed, dewatering, preparing the foundation and necessary back filling, ramming watering ineluding shoring and strutting etc. complete.	212.30	Cum	4173.82
		SSR 2021-22/ I-21.02/BDA-I Rs.	193.00	Cum	
		Total Rs.	193.00	Cum	
		Add 10% H.A Rs.	19.30	Cum	
		Total Rs.	212.30	Cum	
		Say Rs.	212.30	Cum	
4.75	Cum	Item No.2 -Excavation for foundation in Hard murum and boulders including removing the excavated materials upto a distance 50 metres, beyond the building area and stacking and spreading as directed dewatering preparing the bed for the foundation and necessary back filling, ramming. watering including shoring and strutting etc. complete. (Lift upto 1.5m.)By Manual Means	258.50	Cum	1227.88
		SSR 2021-22/I-21.10 Rs.	235.00	Cum	
		Total Rs.	235.00	Cum	
		Add 10% H.A Rs.	23.50	Cum	
		Total Rs.	258.50	Cum	
		Say Rs.	258.50	Cum	
10.17	Cum	Item No .3 :Providing dry/trap/granite /quartzite /gneiss rubble stone soilling 15 cm 20 cm thick including hand packing and compacting complete.	1863.60	Cum	18952.81

R.A. No.4



Quantity	Unit	Item	Rate	Unit	Amount
6.74	Cum	Item No.4: Providing and laying Cast in situ/Ready Mix cement concrete in M-10 of trap/ granite/ quartzite/ gneiss metal for foundation and bedding including bailing out water, formwork, laying/pumping, compacting, roughening them if special finish is to be provided, finishing if required and curing complete, with fully automatic micro processor based PLC without SCADA enabled reversible Drum Type mixer/concrete Batch mix plant (Pan mixer) etc. complete. With natural sand/V.S.I. quality Artificial Sand. R.A. No.1	6394.55	Cum	43099.27
21.91	Cum	Item No.5: Providing and laying Cast in situ/Ready Mix cement concrete in M15 of trap/ granite/quartzite/gneiss metal for bed blocks, foundation blocks and such other items including bailing out water, plywood/steel formwork, laying/ pumping, compacting, roughening them if special finish is to be provided, finishing uneven and honeycombed surface and curing etc. complete. The Cement Mortar 1:3 plaster is considered for rendering uneven and honeycombed surface only. Newly laid concrete shall be covered by gunny bag. R.A. No.2	6930.95	Cum	151857.11
14.00	MT	Item No .8 :Filling in plinth and floors with Contractor soil, Sand or Murum in in 15 Centimeter to 20 Centimeter layers including watering and compaction complete. R.A. No.5	783.15	Cum	10964.10
0.84	Cum	Item No.6:Providing and laying Cast in situ/Ready Mix cement concrete M-20 of trap / granite /quartzite/ gneiss metal for R.C.C. beams and lintels as per detailed designs and drawings or as directed including centering, formwork, cover blocks, laying/pumping, compactionand roughening the surface if special finish is to be provided and curing etc. complete. (Excluding reinforcement and structural steel). with fully automatic micro processor based PLC with SCADA enabled reversible Drum Type mixer/ concrete Batch mix R.A. No.6	12934.70	Cum	10865.15



Quantity	Unit	Item	Rate	Unit	Amount
0.105	Cum	Item No.7:Providing and fixing in position TMT-FE-500 bar reinforcement of various diameters for Reinforced Cement Concrete pile caps, footings, foundations, slabs, beams, columns, canopies, staircase newels, chajjas, lintels, pardis, copings, fins arches etc as per detailed desings drawing and schedules including cutting, binding with wires or tack welding and supproting as required complete.	79064.70	Cum	8302.79

R.A. No.7

19.55	MT	Item No .8 : Providing second class Burnt Brick Masonry with conventional /Indian Standered type bricks in cement mortar 1:6 in superstructure including striking joints.raking out joints.watering and Scaffolding Complete.	8755.30	Cum	171166.12
-------	----	---	---------	-----	-----------

R.A. No.8

93.60	Sqm	Item No.9:- Provinding Internal cement plaster 20 Milimeter thick in two coats in cement mortar 1:4 with neeru finish to concrete brick surface in all positions including scaffolding and curing complete.	478.20	Sqm	44759.52
-------	-----	---	--------	-----	----------

R.A. No.09

124.13	Sqm	Item No.10: Providing sand faced plaster externally in cement mortar using approved screened sand in all positions including base coat of 15 Milimeter thick in Cement Morter 1:4 using waterproofing compound at 1 kg . Per cement bag curing the same for not less than 2 days and keeping the surface of the base coat rough to receive the sand faced treatment of 6 to 8 Milimeter thick in Cement Morter 1 : 4 finishing the surface by taking out grains and curing for fourteen days, scaffolding etc. complete.	670.20	Sqm	83191.93
--------	-----	--	--------	-----	----------

R.A. No.11

Quantity	Unit	Item	Rate	Unit	Amount
35.00	Sqm	Item No.11:-Providing and laying machine cut machine Polished Kota stone flooring 25mm to 30mm thick and required width in plain/ diamond pattern on bed of 1:6 C. M. including cement float, filling joints with neat cement slurry, curing, polishing and cleaning etc. complete.	1345.80	Sqm	47103.00



R.A. No.12

5.20	Rmt	Item No.12: Providing and fixing cold rolled steel hollow door frame 105mm x 60 mm for any sizes including hold fast hinges, tie members with red oxide and gray paint etc complete as per I.S.I. specifications and code of practice prescribed including anticorrosive treatment as directed by the engineer.	2000.90	Rmt	10404.68
------	-----	---	---------	-----	----------

SSR 2021-22/ I-39.49/BDT Rs. 1819.00 Rmt
Add 10% H.A Rs. 181.90 Rmt
Total Rs. 2000.90 Rmt
Say Rs. 2000.90 Rmt

1.89	Sqm	Item No.13: Providing and fixing solid core flush door shutter in single leaf 32 mm thick decorative type of exterior grade as per detailed drawings approved face veneers 3 mm thick on both faces or as directed, all necessary beads, mouldings and lipping, wrought iron hold fasts, chromium plated fixtures and fastenings, with brass mortise lock, chromium plated handles on both sides, and finishing with French Polish etc. complete.	3106.40	Sqm	5871.10
------	-----	---	---------	-----	---------

SSR 2021-22/ I-39.09 Rs. 2824.00 Sqm
Add 10% H.A Rs. 282.40 Sqm
Total Rs. 3106.40 Sqm
Say Rs. 3106.40 Sqm

2.88	Sqm	Item No.14: Providing and fixing mild steel grill work for windows, Ventilators etc 15Kg/ sqm as per drawing including fixtures, necessary welding and painting with one coats of anticorrosive paint and two coats of oil painting complete.	1657.70	Sqm	4774.18
------	-----	---	---------	-----	---------

SSR 2021-22/ I-40.02 Rs. 1507.00 Sqm
Total Rs. 1507.00 Sqm
Add 10% H.A Rs. 150.70 Sqm
Total Rs. 1657.70 Sqm
Say Rs. 1657.70 Sqm

Quantity	Unit	Item	Rate	Unit	Amount
2.88	Sqm	Item No.15: Providing and fixing in position anodised (as per I.S. 1868/1982) alluminium sliding windows of three tracks with rectangular pipe 95 X 38.10 X 0.90 Milimeter at weight 0.637 Kilogramme /Running Meter and windows frame bottom track section 92 X 31.75 X 1.30 Milimeter at weight 1.070 Kilogramme /Running Meter top and side track section 92 X 31.75 X 1.30 Milimeter at weight 0.933 Kilogramme shutter should be of bearing bottom 40 X 18 X 1.25 Milimeter at weight 0.417 Kilogramme /Running Meter inter locking section 40 X 18 X 1.25 Milimeter at weight 0.469 Kilogramme /Running and handle section 52 X 18 X 1.13 Kilogramme at weight 0.488 Kilogramme /Running Meter and top section 40 X 18 X 1.25 Milimeter at weight 0.417 Kilogramme /Running Meter as per detailed drawing and as directed by Enginner in charge with all necessary alluminium section fixtures and fastenings such as roller bearing in nylon casting and self locking catch fitted in vertical section of shutter including 5 Milimeter thick plain glass with all	5350.40	Sqm	15409.15



SSR 2021-22/I-39.44/BDT Rs. 4864.00 Sqm
Total Rs. 4864.00 Sqm
Add 10% H.A Rs. 486.40 Sqm
Total Rs. 5350.40 Sqm
Say Rs. 5350.40 Sqm

7.50	Sqm	Item No.16: Providing and fixing rolling shutter fabricated from steel laths of minimum thickness 0.9 mm with lock plate of 3.15 mm thickness reinforced with 35 x 35 x 5 mm angle section fitted with sliding bolts and handles for both sides, deep M.S. channel section of depth and thickness not less than 65 mm and 3.15 mm respectively with hold fast arrangements, M.S. Bracket plate 300 x 300 x 3.15 mm minimum size and shape with square bar, suspension shaft of minimum 32 mm diameter, hood cover of M.S. sheet not less than 0.9 mm thickness and of any size at top and safety devices including mechanical gear operation arrangement consisting of worm-gear wheels and worms of high grade cast iron or mild steel and one coat of red lead primer etc. complete. (I.S. 62481979) (Without mechanical gear)	4741.00	Sqm	35557.50
------	-----	--	---------	-----	----------

SSR 2021-22/ I-39.24 Rs. 4310.00 Sqm



Quantity	Unit	Item	Rate	Unit	Amount
		Add 10% H.A	Rs. 431.00	Sqm	
		Total Rs.	4741.00	Sqm	
		Say Rs.	4741.00	Sqm	
93.60	Sqm	Item No.17: Providing and applying washable oil-bound distemper of approved colour and shade to old and new surfaces in two coats including scaffolding, preparing the surfaces (Including the Primer coat) complete.	84.70	Sqm	7927.92
		SSR 2021-22 I-36.11/BDPA	Rs. 43.00	Sqm	
		SSR 2021-22 I-35.21/BDOE	Rs. 34.00	Sqm	
		Total Rs.	77.00	Sqm	
		Add 10% H.A	Rs. 7.70	Sqm	
		Total Rs.	84.70	Sqm	
		Say Rs.	84.70	Sqm	
124.13	Sqm	Item No.18: Providing and applying 2 coats of water proof cement paint of approved colour and Shade to the plastered surfaces including scaffolding if necessary, cleaning and preparing the surface, (including primer coat) Complete. Spec No Bd O 8 Page No.406.	118.80	Sqm	14746.64
		SSR 2021-22 / I-35.13/BDO8	Rs. 74.00	Sqm	
		SSR 2021-22 I-35.21/BDOE	Rs. 34.00	Sqm	
		Total Rs.	108.00	Sqm	
		Add 10% H.A	Rs. 10.80	Sqm	
		Total Rs.	118.80	Sqm	
		Say Rs.	118.80	Sqm	
1.15	Mt	Item No.19-Providing, fabricating and erecting at site of work the tubular steel structure (shed) as per standard design and specifications having various spans in between trusses and in multiples of standard length of bays as specified as per standard specifications, inclusive of cost of steel tubular trusses, tubular columns purlins, tie runners, foundation bolts, base plates, nuts and bolts, welding wherever required etc. as per detailed drawing inclusive of one coat of anticorrosive paint and two coats of oil painting of approved quality and shade etc. complete.	110631.40	Mt	127226.11
		SSR 2021-22/ I-23.07	Rs. 100574.00	Mt	
		Total Rs.	100574.00	Mt	
		Total Rs.	100574.00	Mt	
		Add 10% H.A	Rs. 10057.40	Mt	
		Total Rs.	110631.40	Mt	
		Say Rs.	110631.40	Mt	

Quantity	Unit	Item	Rate	Unit	Amount
----------	------	------	------	------	--------

53.20	Sqm	Item No.20: Providing and fixing colour coated	1075.80	Sqm	57232.56
-------	-----	--	---------	-----	----------

Zincalume (R) AZ150 (min 150 gms/sq.mt. total on each side) profiled sheets for roofing. The feed material is manufactured out of nominal 0.45 mm Base Metal Thickness (BMT) (0.5 mm TCT), Hi-strength steel with min.550 MPa yield strength, metallic hot dip coated with Aluminium-Zinc alloy (55% aluminium 43.4% zinc 1.6% silicon) with COLORBOND (R) steel quality super durable polyester paint coat (with inorganic pigment). The paint shall have a total coating thickness of nominal 35 um, comprising of nominal 25 um exterior coat on top surface and nominal 10 um reverse coat on back surface. Profile sheet shall have nom. 950-1050 mm effective cover width and nominal 25-30 mm deep ribs with subtle square fluting in the five pan at nominal 180-250 mm center-to-center. The end rib shall be designed for anti-capillary groove. and return leg. The feed material should have coil

SSR 2021-22/ 38.34 Rs. 978.00 Sqm

Add 10% H.A. Rs. 97.80 Sqm

Total Rs. 1075.80 Sqm

Say Rs. 1075.80 Sqm

Total Rs.

Say Total

Rs. 874812.34

Rs. 874812.00



NAME OF WORK : Construction of Pragati Community Managed Resources Center, Contrution of
Turmeric Collection Center Under SMART Programme in Gat No.85 At- Nune Tal & Dist . Satara.



MEASUREMENT

Particular	No.	Length	Breadth	Height	Quantity
Item No.1 -Excavation for foundation in earth ,soil of all types, sand, gravel and soft murum, including removing the excavated material up to a distance of 50 Meter beyond the bulding area &					
For Wall	2	6.20	0.60	0.90	6.70 Cum
	2	7.00	0.60	0.90	7.56 Cum
For Steps	1	5.00	1.80	0.60	5.40 Cum
				Total Qty	19.66 Cum

Item No.2 -Excavation for foundation in Hard murum and boulders including removing the excavated materials upto a distance 50 metres, beyond the building area and stacking and					
For Wall	2	6.20	0.60	0.30	2.23 Cum
	2	7.00	0.60	0.30	2.52 Cum
				Total Qty	4.75 Cum

Item No .3 :Providing dry/trap/granite /quartzite /gneiss rubble stone soilling 15 cm 20 cm thick including hand packing and compacting complete.					
For Wall	2	6.20	0.60	0.20	1.49 Cum
	2	7.00	0.60	0.20	1.68 Cum
Flooring	1	5.00	7.00	0.20	7.00 Cum
				Total Qty	10.17 Cum

Item No.4: Providing and laying Cast in situ/Ready Mix cement concrete in M-10 of trap/ granite/ quartzite/ gneiss metal for foundation and bedding including bailing out water, formwork,					
For Wall	2	6.20	0.60	0.15	1.12 Cum
	2	7.00	0.60	0.15	1.26 Cum
For Steps	1	4.80	1.80	0.10	0.86 Cum
Flooring	1	5.00	7.00	0.10	3.50 Cum
				Total Qty	6.74 Cum

Item No.5: Providing and laying Cast in situ/Ready Mix cement concrete in M15 of trap/ granite/quartzite/gneiss metal for bed blocks, foundation blocks and such other items including					
For Wall	2	5.90	0.45	1.80	9.56 Cum
	2	7.00	0.45	1.80	11.34 Cum
For Steps	5	4.50	0.30	0.15	1.01 Cum
				Total Qty	21.91 Cum



Particular	No.	Length	Breadth	Height	Quantity
Item No.8 :Filling in plinth and floors with Contractor soil, Sand or Murum in 15 Centimeter to 20 Centimeter layers including watering and compaction complete.					
Flooring	1	5.00	7.00	0.40	14.00 Cum
Total Qty					14.00 Cum

Item No.6:Providing and laying Cast in situ/Ready Mix cement concrete M-20 of trap / granite /quartzite/ gneiss metal for R.C.C. beams and lintels as per detailed designs and drawings or as					
For front Side	1	5.00	0.23	0.30	0.35 Cum
	2	1.80	0.23	0.15	0.12 Cum
Chajja	1	5.00	0.45	0.10	0.23 Cum
	2	1.50	0.45	0.10	0.14 Cum
Total Qty					0.84 Cum

Item No.7:Providing and fixing in position TMT-FE-500 bar reinforcement of various diameters for Reinforced Cement Concrete pile caps, footings, foundations, slabs, beams, columns,					
Beams and Lintel	0.84	x	125 Kg/Cum	=	105.00 Kg
					105.00 Kg
					0.105 Mt

Item No.8 : Providing second class Burnt Brick Masonry with conventional /Indian Standard type bricks in cement mortar 1:6 in superstructure including striking joints,raking out					
Plinth	2	5.46	0.23	3.65+5.45+3.65/3	10.67 Cum
	2	7.00	0.23	3.65	11.75 Cum
Total Qty					22.42 Cum

Deduction					
Rolling Shutter	1	3.00	0.23	2.50	1.73 Cum
D	1	1.00	0.23	2.10	0.48 Cum
W	2	1.20	0.23	1.20	0.66 Cum
					2.87 Cum
Net Quantity after deduction					19.55 Cum

Item No.9:- Providing Internal cement plaster 20 Milimeter thick in two coats in cement mortar 1:4 with neera finish to concrete brick surface in all positions including scaffolding and curing					
	2	5.00	3.65+5.45+3.65/3	=	42.50 Sqm
	2	7.00	3.65	=	51.10 Sqm
Total Qty					93.60 Sqm

Item No.10: Providing sand faced plaster externally in cement mortar using approved screened sand in all positions including base coat of 15 Milimeter thick in Cement Mortar 1:4 using					
Plinth	2	5.46	4.55+6.35+4.55/3		56.24 Sqm
	2	7.46	4.55	=	67.89 Sqm
Total Qty					124.13 Sqm

Item No.11:-Providing and laying machine cut machine Polished Kota stone flooring 25mm to 30mm thick and required width in plain/ diamond pattern on bed of 1:6 C. M. including cement					
	1	5.00	7.00	=	35.00 Sqm
	2				
Total Qty					35.00 Sqm



Particular	No.	Length	Breadth	Height	Quantity
Item No.12: Providing and fixing cold rolled steel hollow door frame 105mm x 60 mm for any sizes including hold fast hinges, tie members with red oxide and gray paint etc complete as per	D	1	x	5.20	=
					5.20 Rmt
				Total Qty	5.20 Rmt

Item No.13: Providing and fixing solid core flush door shutter in single leaf 32 mm thick decorative type of exterior grade as per detailed drawings	D	1	0.90	2.10	=	1.89 Sqm
						Total Qty 1.89 Sqm

Item No.14: Providing and fixing mild steel grill work for windows, Ventilators etc 15Kg/ sqm as per drawing including fixtures, necessary welding and painting with one coats of anticorrosive	W	2	1.20	1.20	=	2.88 Sqm
						Total Qty 2.88 Sqm

Item No.15: Providing and fixing in position anodised (as per I.S. 1868/1982) aluminium sliding windows of three tracks with rectangular pipe 95 X 38.10 X 0.90 Milimeter at weight 0.637	W	2	1.20	1.20	=	2.88 Sqm
						Total Qty 2.88 Cum

Item No.16: Providing and fixing rolling shutter fabricated from steel laths of minimum thickness 0.9 mm with lock plate of 3.15 mm thickness reinforced with 35 x 35 x 5 mm angle section fitted		1	3.00	2.50	=	7.50 Sqm
						Total Qty 7.50 Cum

Item No.17: Providing and applying washable oil- bound distemper of approved colour and shade to old and new surfaces in two coats including scaffolding, preparing the surfaces (Including the		2	5.00	3.65+5.45+3.65/3	=	42.50 Sqm
		2	7.00	3.65	=	51.10 Sqm
						Total Qty 93.60 Sqm

Item No.18: Providing and applying 2 coats of water proof cement paint of approved colour and Shade to the plastered surfaces including scaffolding- if necessary, cleaning and preparing the Plinth		2	5.46	4.55+6.35+4.55/3	=	56.24 Sqm
		2	7.46	4.55	=	67.89 Sqm
						Total Qty 124.13 Sqm

Item No.19-Providing, fabricating and erecting at site of work the tubular steel structure (shed) as per standard design and specifications having various spans in between trusses and in multiples of

Total Qty 1.15 MT

Item No.20: Providing and fixing colour coated Zinalume (R) AZ150 (min 150 gms/sq.mt. total on each side) profiled sheets for roofing. The feed material is manufactured out of nominal 0.45		2	3.00	8.06	=	48.36 Sqm
		1	8.06	0.60	=	4.84 Sqm
			3			

NAME OF WORK : Construction of Pragati Community Managed Resources Center, Contrution of
 Turmeric Collection Center Under SMART Programme in Gat No.85 At- Nunc Tal & Dist.-Satara.

Royalty Consumption Statement

Item No.	Item in Brief	Quantity	Unit	Material Consumption Rate / Quantity											
				Sand			Crushed Metal			Trap Metal			Soling Stone		
				Consumption	Qty in Cum	Consumption	Qty in Cum	Consumption	Qty in Cum	Consumption	Qty in Cum	Consumption	Qty in Cum		
1	2	3	4	5	6	7	8	9	10	11	12				
2	Soling	10.17	1.20	12.204											
3	Murum Filling	14.00	1.00	14.000											
				26.204	Cum										



NAME OF WORK :Construction of Pragati Community Managed Resources Center, Contrution of
Turmeric Collection Center Under SMART Programme in Gat No.85 At- Nune Tal & Dist .-Satar



SUB ESTIMATE NO. 4 - ROYALTY CHARGES

ABSTRACT

Quantity	Unit	Item	Rate	Unit	Amount
26.20	Cum	<u>Item No.1</u> -Royalty Charges for various building construction bonified materials which are used for government bonafied works and for which royalty charges are to be paid by the contractor. (This item is to be paid to the contractor only after he pays the royalty amount to revenue department and produces the required voucher.	211.95	Cum	5553.09
26.20	Cum	<u>Item No.2</u> -Royalty Cess 2.00%	4.23	Cum	110.83

Total Rs.
Say Total

Rs. 5663.92
Rs. 5664.00



NAME OF WORK : Construction of Pragati Community Managed Resources Center, Contruction of Turmeric Collection Center Under SMART Programme in Gat No.85 At-Nune Tal & Dist.-Satara.

Abstract of Test Results

Sr. No.	Construction Material	Test	Frequency of testing	Reference	Quantity	No. of tests required as per frequency of testing	Rate as per VQC DSR	Amount	Remarks
1	Metal								
2	Sand	Gradation B) Fineness modulus, (sieve analysis), silt an	At the beginning and if there is any change in			1	690	690.00	
3	Cement concrete	Compressive strength	At the beginning and if there is any change in Upto 5cum - 1set 6-15cum - 2sets	MOST specification		2	1380	1380.00	
4	Bricks	Group Test	At the beginning and if there is any change in			1	2175	2175.00	
							Total Rs.	5625.00	

Contractor

No of Correction

Executive Engineer

NAME OF WORK : Construction of Pragati Community Managed Resources Center, Construction of
Turmeric Collection Center Under SMART Programme in Gat No.85 At- Nune Tal & Dist. -Satara



RATE ANALYSIS

RA. No.1 - Providing and laying Cast in situ/Ready Mix cement concrete in M-10 of trap/ granite/ quartzite/ gneiss metal for foundation and bedding including bailing out

SSR 2021-22 I-24.01/BDE-1..

Deduct SCADA

Rs	5538.00	/Cum
Rs	-120.00	/Cum
Rate Rs	5418.00	/Cum
Rs.	541.80	/Cum
Rate Rs	5959.80	/Cum

Add 10% H.A.

Add Extra lead charges

Sand	0.4700	299.83
Cement	0.2200	108.92
Crushed Metal	0.90	299.83

Rs	140.92	/Cum
Rs	23.96	/Cum
Rs	269.85	/Cum
Total Rs	6394.53	/Cum
Say Rs	6394.55	/Cum

RA. No.2 - Providing and laying Cast in situ/Ready Mix cement concrete in M15 of trap/ granite/quartzite/gneiss metal for bed blocks, foundation blocks and such other items

SSR 2021-22 I-24.08

Deduct SCADA

Rs	6030.00	/Cum
Rs	-120.00	/Cum
Rate Rs	5910.00	/Cum
Rs.	591.00	/Cum
Rate Rs	6501.00	/Cum

Add 10% H.A.

Add Extra lead charges

Sand	0.4250	299.83
Cement	0.3000	108.92
Crushed Metal	0.90	299.83

Rs	127.43	/Cum
Rs	32.68	/Cum
Rs	269.85	/Cum
Total Rs	6930.96	/Cum
Say Rs	6930.95	/Cum

R.A. No. 3- Providing second class Burnt Brick masonry with conventional/I.S. type bricks in cement mortar 1:6 in foundations and plinth of inner walls/in plinth external

Ground Floor

SSR 2021-22 I-27.01/BDG 5

Rs	7343.00	/Cum
Rate Rs	7343.00	/Cum
Rs.	734.30	/Cum
Rate Rs	8077.30	/Cum

Add 10% H.A.

Add Extra lead charges

Sand	0.320	299.83
Cement	0.079	681.58
Brick	0.4750	681.580

Rs	95.95	/Cum
Rs	53.84	/Cum
Rs	323.75	/Cum
Total Rs	8550.84	/Cum
Say Rs	8550.85	/Cum



R.A. No.4 -Providing dry/trap/granite /quartzite /gneiss rubble stone soiling 15 cm thick including hand packing and compacting complete.
SSR 2021-22 /I-21.38/BDA.

			Rs	1294.00 /Cum
			Rate Rs	1294.00 /Cum
Add 10% H.A.			Rs.	129.40 /Cum
			Rate Rs	1423.40 /Cum
Add Extra lead charges			Rs	440.18 /Cum
Rubble	1.2000	366.82		
			Total Rs	1863.58 /Cum
			Say Rs	1863.60 /Cum

R.A. No.5 - Filling in plinth and floors with Contractor soil, Sand or Murum in in 15 Centimeter to 20 Centimeter layers including watering and compaction complete.

Ground Floor

SSR 2021-22 / I-21.37/BDA 11.

			Rs	550.00 /Cum
			Rate Rs	550.00 /Cum
Add 10% H.A.			Rs.	55.00 /Cum
			Rate Rs	605.00 /Cum
Add Extra lead charges			Rs	178.13 /Cum
Murum	1.0000	178.13		
			Total Rs	783.13 /Cum
			Say Rs	783.15 /Cum

R.A. No.6 - Providing and laying Cast in situ/Ready Mix cement concrete M-20 of trap / granite /quartzite/ gneiss metal for R.C.C. beams and lintels as per detailed designs

Ground Floor

SSR 2021-22 I-25.50/BDF6

Deduct SCADA

			Rs	11483.00 /Cum
			Rs	-120.00 /Cum
			Rate Rs	11363.00 /Cum
Add 10% H.A.			Rs.	1136.30 /Cum
			Rate Rs	12499.30 /Cum
Add Extra lead charges			Rs	127.43 /Cum
Sand	0.4250	299.83		
Cement	0.3500	108.92		
Metal	0.9000	299.83		
			Total Rs	12934.70 /Cum
			Say Rs	12934.70 /Cum

R.A. No.7- Providing and fixing in position TMT-FE-500 bar reinforcement of various diameters for Reinforced Cement Concrete pile caps, footings, foundations, slabs,

Ground Floor

SSR 2021-22 I-26.33/BDF17.

			Rs	71778.00 /Mt
			Rate Rs	71778.00 /Mt
Add 10% H.A.			Rs.	7177.80 /Mt
			Rate Rs	78955.80 /Mt
Add Lead Charges.			Rs.	108.92 /Mt
			Rate Rs	79064.72 /Mt
			Say Rs	79064.70 /Mt



R.A. No. 8- Providing second class Burnt Brick Masonry with conventional /Indian Standard type bricks in cement mortar 1:6 in superstructure including striking

Ground Floor

SSR 2021-22 I-27.05/BDG 5

Add 10% H.A.

Add Extra lead charges

Sand	0.320	299.83
Cement	0.079	108.92
Brick	0.4750	681.580

Rs	7570.00 /Cum
Rate Rs	7570.00 /Cum
Rs.	757.00 /Cum
Rate Rs	8327.00 /Cum
Rs	95.95 /Cum
Rs	8.60 /Cum
Rs	323.75 /Cum
Total Rs	8755.30 /Cum
Say Rs	8755.30 /Cum

R.A. No.09- Providing Internal cement plaster 20 Milimeter thick in two coats in cement mortar 1:4 with neeru finish to concrete brick surface in all positions including

SSR 2021-22 I-32.07/BDL 4A

SSR 2021-22 /I-32.15/BDL10.

Add 10% H.A.

Add Extra lead charges

Sand	0.025	299.83
Cement	0.009	108.92

Rs	366.00 /Sqm
Rs	61.00 /Sqm
Total Rs	427.00 /Sqm
Rs.	42.70 /Sqm
Rate Rs	469.70 /Sqm
Rs	7.50 /Sqm
Rs	0.98 /Sqm
Total Rs	478.18 /Sqm
Say Rs	478.20 /Sqm

R.A. No.11- Providing sand faced plaster externally in cement mortar using approved screened sand in all positions including base coat of 15 Milimeter thick in Cement

SSR 2021-22 /I-32.11/BDL 7.

Add 10% H.A.

Add Extra lead charges

Sand	0.033	299.83
Cement	0.013	108.92

Rs	599.00 /Sqm
Total Rs	599.00 /Sqm
Rs.	59.90 /Sqm
Rate Rs	658.90 /Sqm
Rs	9.89 /Sqm
Rs	1.42 /Sqm
Total Rs	670.21 /Sqm
Say Rs	670.20 /Sqm

R.A. No.12- Providing and laying machine cut machine Polished Kota stone flooring 25mm to 30mm thick and required width in plain/ diamond pattern on bed of 1:6 C. M.

SSR 2021-22 I-33.06

Add 10% H.A.

Add Extra lead charges

Sand	0.020	299.83
Cement	0.010	108.92

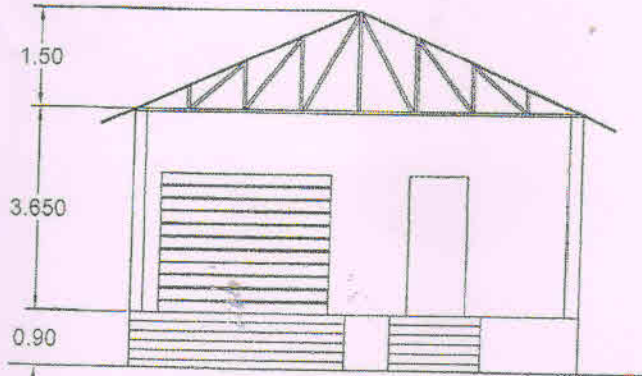
Rs	1217.00 /Sqm
Total Rs	1217.00 /Sqm
Rs.	121.70 /Sqm
Rate Rs	1338.70 /Sqm
Rs	6.00 /Sqm
Rs	1.09 /Sqm
Rs	1345.79 /Sqm
Say Rs	1345.80 /Sqm



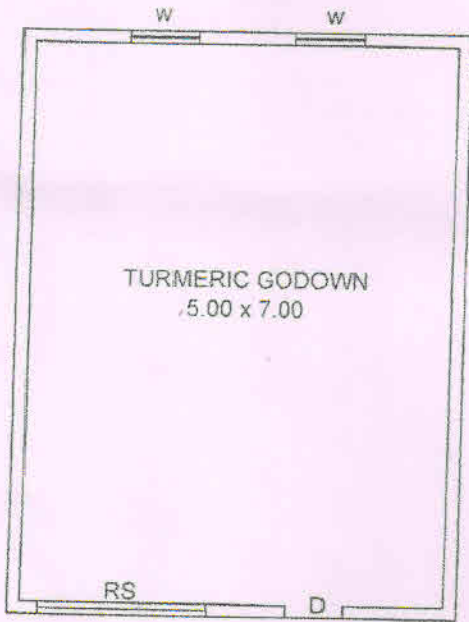
NAME OF WORK : Construction of Pragati Community Managed Resources Center, Contrution of
Turmeric Collection Center Under SMART Programme in Gat No.85 At- Nune Tal & Dist -Satara.

LEAD CHARGES STATEMENT

Sr.No.	Materials	Total lead in Km.	Total lead Charges	Initial Lead Charges	Extra Lead Charges	Remarks
1	2	3	4	5	6	7
1	Rubble	10.00	366.82	0.00	366.82	Limbkhind Quarry
2	Metal 60/40 mm	10.00	287.34	0.00	287.34	Limbkhind Quarry
3	Crushed metal	10.00	299.83	0.00	299.83	Limbkhind Quarry
4	Hard/Soft Murum	2.00	178.13	0.00	178.13	Local
5	VSI Sand	10.00	299.83	0.00	299.83	Limbkhind
5	Cement	2.00	108.92	0.00	108.92	Limbkhind
6	Brick	35.00	1434.90 1.4349	0.00 x475	1434.90 681.58	Limbkhind



SECTIONAL ELEVATION



PLAN

Name of Work:-
Construction of Pragati Community
Managed Resource Center Construction
of Turmeric Collection Center Under
Smart Programme in Gat No - 85,
At Nune, Tal & Dist - Satara.

TYPE OF CONSTRUCTION -

EXTERNAL 0.23 m TH. BR WALL .
EXTERNAL SAND FACE PLASTER .
INTERNALLY NEERU FINISH PLASTER .
ALL MATERIALS ARE USED AS PER ISI SPECIFICATIONS.

AREA STATEMENT

TOTAL B/U AREA = 35.00 Sq.M.

DOOR & WINDOW SCHEDULE

D1 = 1.00 X 2.40 W=1.20 X 1.20
RS = 3.00 X 2.40

ENGINEER'S SIGN

OWNERS SIGN