

**UGALE INFRASTRUCTURE
ENGINEERS & DEVELOPERS**

ARCHITECTURAL CONSULTANT, ENGINEER, RCC DESIGNER & ESTIMATION

Dr. UMESH D. UGALE
MTECH, B.E. CIVIL, V/JII
Cell. - 9579440111

Plot No. 44, SANKALP PARADISE, NEAR
GANPATI TEMPLE, SHIVJITNAGAR,
SINNAR, NASHIK-422 103

UMESH DNYANDEO UGALE (GST NO. - 27ACEPU7217M1Z1)

SMRUTI FPO: ESTIMATE OF PLUMBING & ELECTRICITY WORK AT VILLAGE - HARSULE, GAT NO. SINNAR, TAL - SINNAR, & DIST. - NASHIK.

SR. NO.	DESCRIPTION	QTY	UNIT	RATE	AMOUNT
1	METER BOX - Supply, installation, testing & commissioning of dust & vermine proof wall mounted cubicle type Metering Board fabricated out of 16 SWG CRS & powder coated with CT Metre provision including supply & installation of 100 A HRC Fuse with suitable Fuse-3 nos. and Nuetral link, 125 A TPN isolator -1 no. Panel	3	NO	1000	3000
2	VERTICAL POWER DB -Supply, erection, testing and commissioning of 8 way TPN Vertical MCB DB. Made out of 16SWG CRCA Sheet, dust and vermin proof, wall mounting consisting of the following Incomer : 63A (100 MA) 4 Pole MCB DB - 1No. Outgoing : 40 A 3Pole MCB - 1 No for LDB Outgoing : 32A SP MCB - 2 Nos for UPS Outgoing : 32A SPMCB - 4 Nos Outgoing : 20A SPMCB - 4 Nos Outgoing : 16A SPMCB - 4 Nos Outgoing : 10A ASP MCB - 2 Nos	3	NO	500	1500
3	DISTRIBUTION BOARD for Lighting Supply, installation, testing & commissioning of wall mounted type Double door dust & vermine proof 4 Way TPN MCB DB cocedaled on wall comprising the following. 4 pole 40A, (30 MA) ELCB as incomer -1 no 6A- 10 A MCB- 12 nos. as outgoing for lighting	15	NO	400	6000
	Supply & installation of 40 A 4 pole MCB Change Over Switch with centre offing metal encloser for lighting circuit	7	NO	600	4200
	DISTRIBUTION BOARD- for UPS -Supply & installation of 40 A 2 pole MCB with encloser for UPS input supply.	3	NO	2000	6000
	Supply, erection, testing & commissioning of wall mounted type Double door dust & vermine proof 12 Way SPN MCB DB cocedaled on wall comprising the following. 2 pole 40 A MCB isolator- 1 no as incomer 6/10 A MCB -12 Nos as outgoing to distribute UPS power supply	12	NO	750	9000

	CABLE LAYING AND TERMINATION-Supply, laying & dressing of 1.1 KV grade PVC insulated armoured cable with Aluminium conductor along with 2 layer 10 SWG Cu. conductor concealed or on wall/ ceiling/ trench/cable rack with clamps etc including back filling of trenches if necessary				
	3.5 core 50 sq.mm from Meter box to VDB	290	MTR	350	101500
	4 core 10 sq.mm (from VDB to LDB)	34	MTR	700	23800
	4 core 10 sq.mm (from VDB to ATM)	34	MTR	400	13600
7	End termination of above cables using flange type cable glance and heavy duty finned Al. crimping type cable sockets including cable earthing.				
	50 sq.mm gland	3	NO	500	1500
	10 sq.mm gland	3	NO	1450	4350
8	EARTHING -Supply, installation, testing & commissioning of 600 X 600 X 3 mm Cu. Plate buried in ground at a depth of 3 mtr. With alternate layers of charcoal & salt including supplying & fixing of 20 mm dia. 3 mtr. long perforated pipe with funnel for watering , construction of inspection chamber by masonry work to accomodate 460 x 460 mm Cl. heavy duty hinged cover etc. as per IS:3043 and including all civil work for 2 nos. UPS. Supply & providing ISI pipe earthing as per IS : 3043 with 3 mtr. long 40 mm dia B' class GI pipe providing GI funnel with wire mesh on top providing GI clamp on top of GI pipe test joint, filling around the GI pipe at a radius of 15 cm with homogeneous mixture of charcoal, common salt & river sand up to a Ht. of 2.5 mtr. from the bottom and rest of the portion with excavated soil, providing brick work masonaries, plastering, fixing cast iron covering etc. complete for KSEB main panel.	4	NO	10000	40000
9	Supply & laying following Cu. Strips/wires				
	No. 10 SWG Cu. wire from KSEB main panel to earth pit.	75	MTR	310	23250
	16 sq.mm Cu. Wire through 20 mm rigid PVC conduit for UPS earthing.	75	MTR	320	24000
	30 cm long Earth bunch of 25 x 3 mm Cu. Suitable bented into shape with necessary holes for termination for UPS DB, LDB & VDB.	5	NOS	2500	12500
	Supply and laying of 3 runs of 4 sq.mm PVC Cu. Wire through 20mm PVC pipe for taking supply for 2 KVA Single phase generator.	50	MTR	450	22500

10	WIRING FOR LIGHT, FAN, PLUG, SOCKETS etc. -Supply all materials & wiring recess/surface through wall, floor, ceiling etc. as per colour code with 1.5 sq. mm PVC insulated FRLS stranded Cu. wire for the points & 1.5 sq.mm PVC insulated green colour stranded. Cu. Wire as continuous Earth for points with independent Earth wire for each circuit through ISI grade 20/25 mm PVC conduit including all accessories as per IS : 9537 part II including circuit wiring using 2.5 sq.mm Pvc insulated stranded Cu . wire for phase neutral & Earth with all materials & installation of factory made MS boxes, 2 plate model modular switches & 3 plate ceiling rose/connectors / angle holders etc. of approved make for electrical fixtures.No of cables in conduit should be limited to the IS standards & as per the conditions laid down in the Tender.Check nuts to be provided in the conduits in switch boxes, DB etc.					
	The rate includes circuit wiring & no cost is allowed for additional length of circuit wiring (Wire make Phenolex/RR/Wipro Suraksha)	40	NO	150	6000	
	1 light controlled by 1 switch	17	NO	250	4250	
	2 lights controlled by 1 switch					
	Supply all material & wiring same as above but for 6 A 5 pin plug points with 6 A switch in separate location with indicator using 3 run 1.5 sq.mm 1.1 KV grade PVC insulated Cu. Stranded wire as per colour code for phase, neutral & Earth. (independant in position)	17	NO	180	3060	
11	WIRING FOR COMPUTER WORK STATIONS					
	Supply all materials & wiring through recessed/surface through wall, floor, ceiling etc. as per colour code with 3 runs of 2.5 sq. mm PVC insulated stranded Cu. wire for phase neutral and green colour for Earth through ISI marked 20 mm PVC conduits from DB for Computer Workstation, including supply & installation of 3 nos. 6A 3 pin plug & socket with 3 nos. switches in metal boxes including chipping the floor , plastering etc if necessary	17	NO	1500	25500	
12	TELEPHONE POINTS					
	Supply of all materials wiring recessed/Surface through wall ,Floor ,Ceiling ,Partitions etc using 4 pair .5mm telephone cables in 20mm PVC conduit from the exchange concealed wall, floor partitions etc including the cost of modular 2 plate type Telephone Jack RJ11 mounted in metal boxes ,one seperate cable for each point.Number of cables in one conduits imited to three.The rate is for average length and no cost is allowed for additional Length	3	NO	1700	5100	
					340,000	

SUMMARY

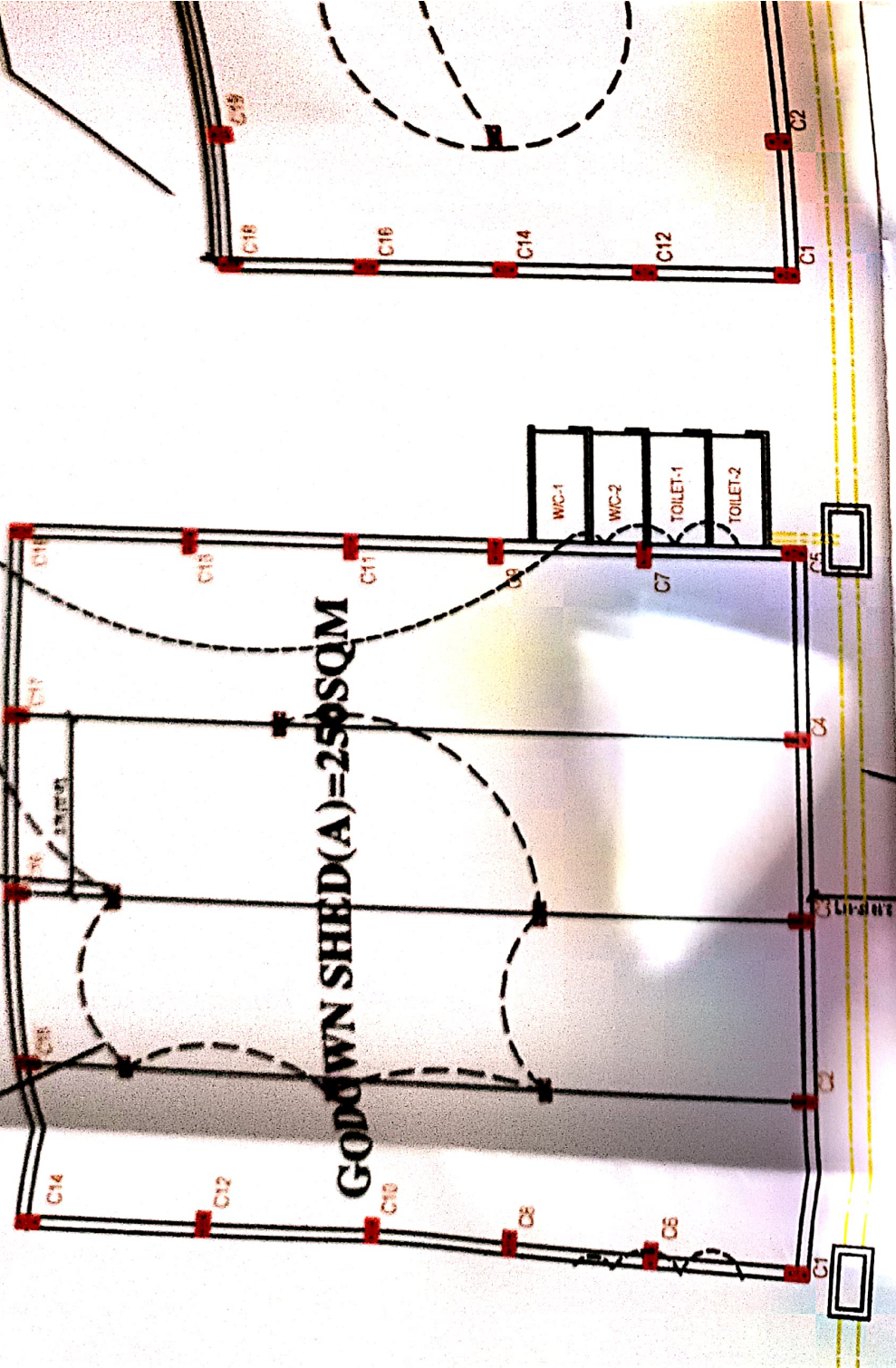
SR.	DESCRIPTION			
	TOTAL			340610
	ADD 18% GST			6130
			TOTAL	401910

LIGHT CABLES

LIGHT POINT



PROPOSED WATER T



GODOWN SHED(A)=250 SQM

PLUMBING LAYOUT PLAN

ITODESK EDUCATIONAL PRODUCT